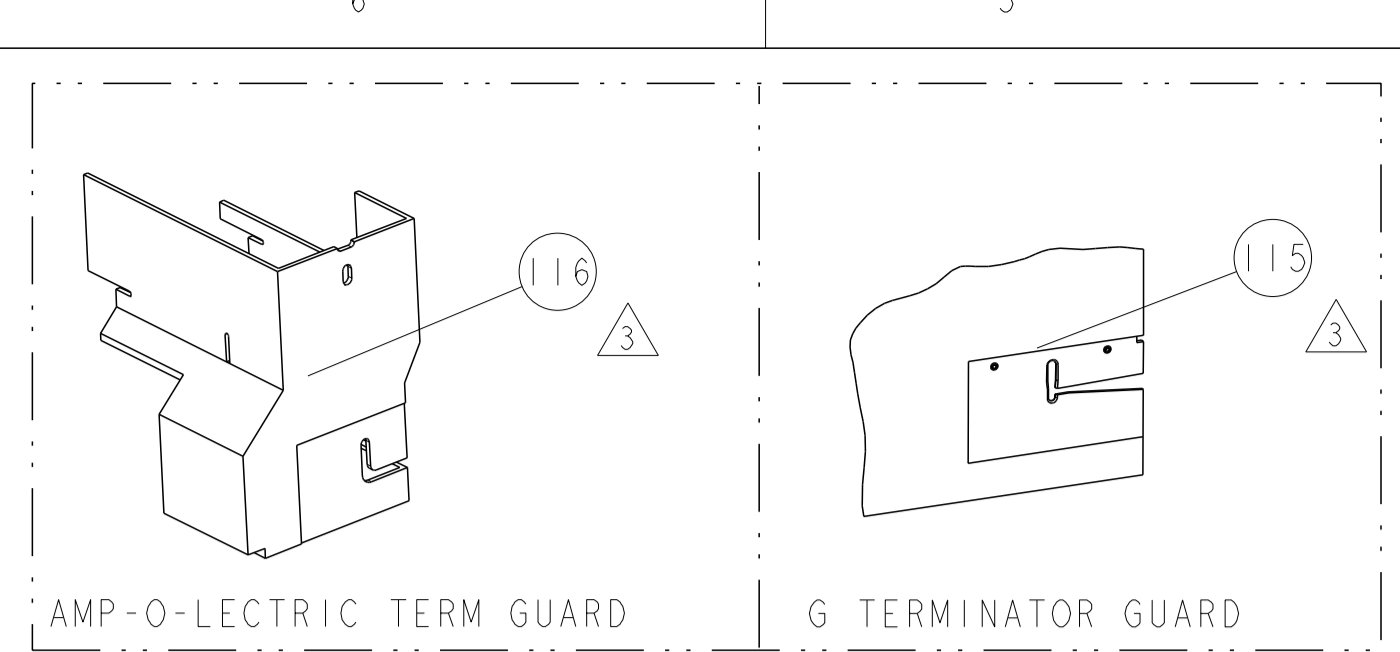


THIS DRAWING IS UNPUBLISHED.		RELEASED FOR PUBLICATION		29	
COPYRIGHT © BY TYCO ELECTRONICS CORPORATION. ALL RIGHTS RESERVED.					
PART NUMBER	REV	FIRST USED	POWER UNIT	FEED TYPE	DESCRIPTION
1855289-1	B	122500-1	LEADMAKER	AIR FEED	CUTS CARRIER
1855289-2	A	565435-5	BENCH MODEL K	AIR FEED	CUTS CARRIER
1855289-3	A	354500-1	BENCH MODEL G	AIR FEED	CUTS CARRIER
7-1855289-7	A	-	-	-	SPARE PARTS



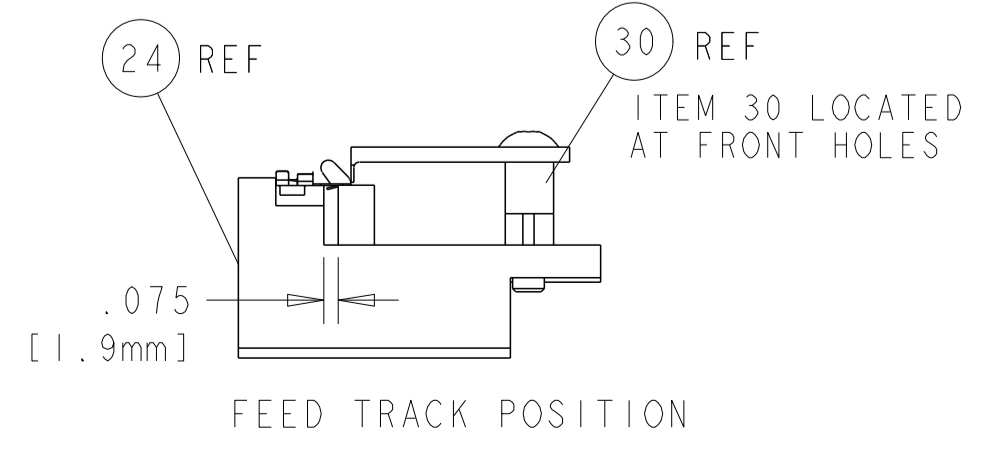
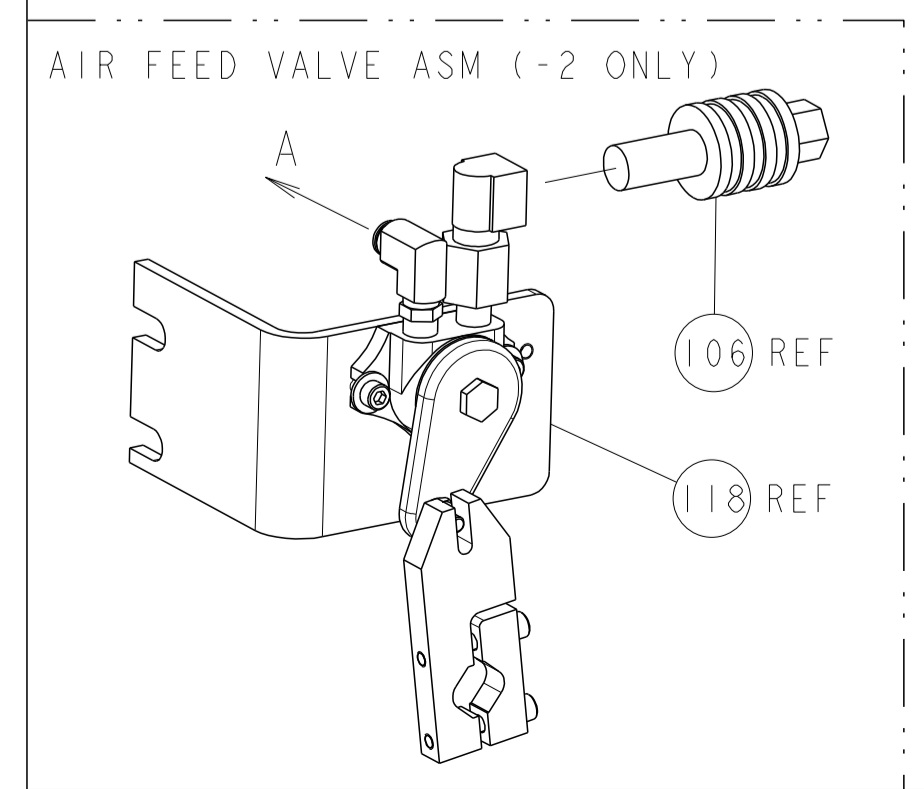
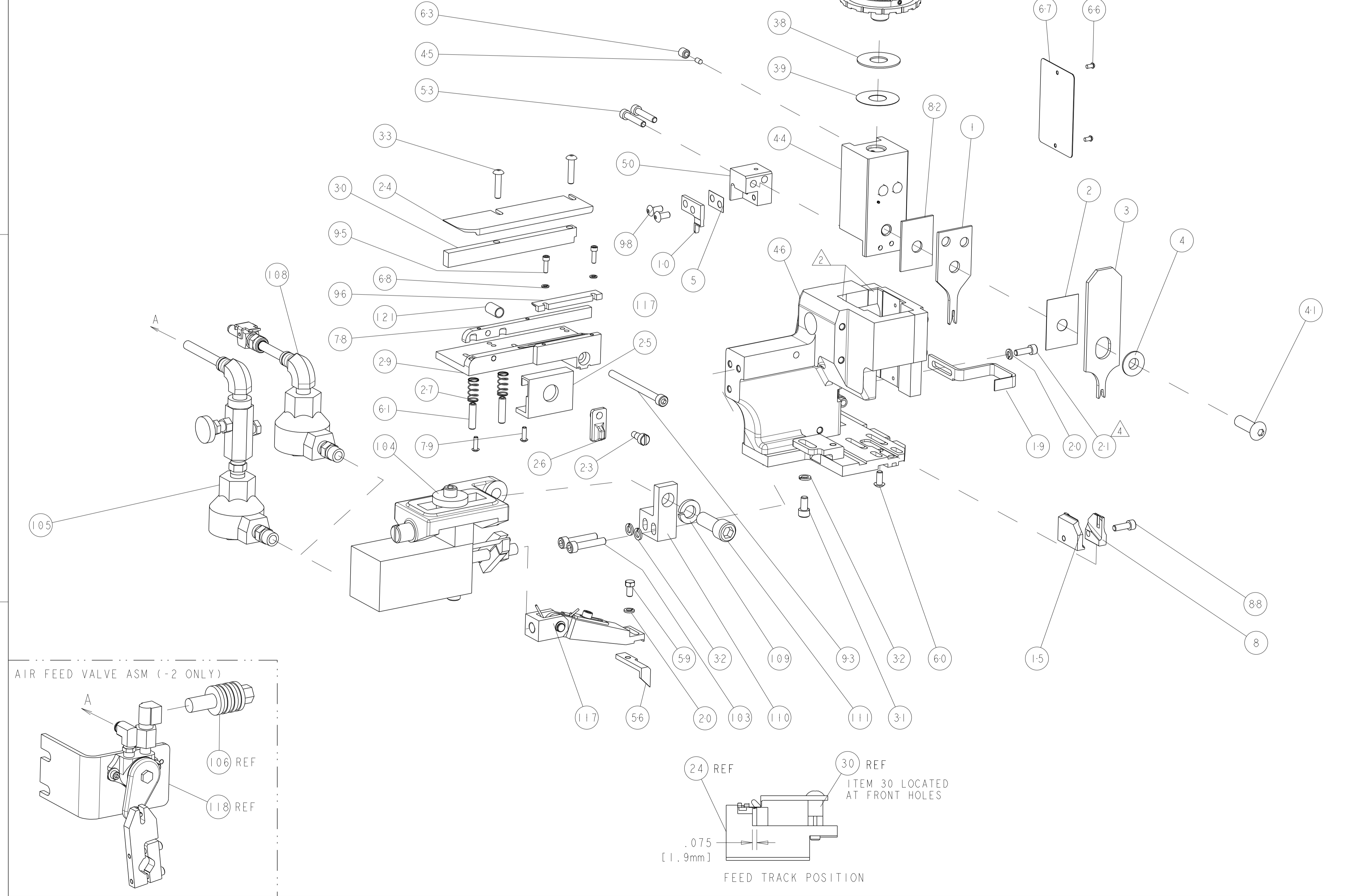
TERMINAL NAME: KK® Crimp Terminal					
TE P/N	MOLEX P/N	MOLEX TERMINAL - MOLEX CRIMP SPECS		REF SETTING	
286698-1	08-50-0113	CRIMP HEIGHT	WIRE SIZE	-	
286698-2	08-55-0101	SEE CRIMP HEIGHTS TABLES ON SHEET 2		-	
286698-3	08-56-0109	-		-	
286698-4	08-52-0101	-		-	
286698-5	08-65-0815	-		-	
286698-6	08-65-0813	-		-	
286698-7	97-00-0444	-		-	
1949741-1	08-70-0048	CRIMP	SIZE	TYPE	RANGE
1949741-2	08-70-0064	WIRE	.054 [1.37mm]	F	SEE SHEET 2
-	-	INSUL	.077 [1.96mm]	F	SEE SHEET 2
WIRE STRIP LENGTH 1.00 - 1.25 [2.54 - 3.18mm]		TERM APPL SPEC NONE	FEED 900 [5.08mm]	APPLICATOR INSTRUCTIONS 408-8040	SET UP GAGE 458637-1

LOC	DIST	REVISIONS					
A	66	P	LTR	DESCRIPTION	DATE	DWN	APVD
		BI		ECR-12-013912	03AUG2012	L.Z	S.X

- 1 RECOMMENDED SPARE PARTS
- 2 GREASE LIGHTLY
- 3 GUARD MUST BE IN PLACE WHEN OPERATING APPLICATOR IN A BENCH MACHINE
- 4 INSTALL ITEMS 101, 102, & 119 ON SIDE OF STRIPPER ON APPL HOUSING USING ITEM 21.
- 5 FOR LARGE INSULATION DIAMETER PER TERMINAL MANUFACTURER .043-.067[1.09-1.70mm].

* WARNING
ON INSTALLATION, SET WIRE DISC TO LARGEST WIRE SIZE SETTING. USE OF SETTINGS BELOW MIN. REQUIRED CRIMP HEIGHT SETTING WILL CAUSE DAMAGE TO CRIMP TOOLING.

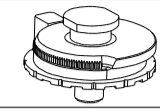
4	-	1	1	1	-	1-22281-8	SPRING, COMPRESSION	121
	-	42	21	42	IN	27319-4	TUBING, POLY-FLO, NATURAL	119
	-	REF	-	-	-	692655-6	AIR FEED VALVE ASSEMBLY	118
	-	1	1	1	-	461062-1	FEED FINGER ASSEMBLY	117
	-	REF	-	-	-	455749-1	GUARD WINDOW	116
3	-	REF	-	-	-	679532-1	INSERT, GUARD	115
	-	1	1	1	-	3-21001-5	SCR, SKT HD CAP 3/8-16 X 1.000	111
	-	1	1	1	-	459610-1	MOUNT, FEED BRACKET	110
	-	1	1	1	-	21024-8	WASHER, SPRG LOCK, REG 3/8	109
	-	1	-	1	-	692655-7	AIR FEED VALVE ASSEMBLY	108
	-	REF	-	-	-	24024-2	VALVE, SHUT OFF	106
	-	1	-	1	-	692655-5	AIR FEED VALVE ASSEMBLY	105
	-	1	1	1	-	461065-1	ASSEMBLY, AIR FEED	104
	-	2	2	2	-	3-21000-9	SCR, SKT HD CAP 10-32 X 1.000	103
	-	1	1	1	-	986220-3	CLAMP, CABLE, BLACK	102
	-	1	-	1	-	23238-1	INSERT, COUPLING	101
4	-	2	2	2	-	2-21002-1	SCR, BTN SKT HD CAP 8-32 X .375	98
	-	1	1	1	-	2-690712-4	FRONT STRIP GUIDE	96
	-	2	2	2	-	1-21000-4	SCR, SKT HD CAP 4-40 X .375	95
	-	1	1	1	-	8-21000-7	SCR, SKT HD CAP 10-32 X 2.500	93
	-	1	1	1	-	2-21000-7	SCR, SKT HD CAP 8-32 X .500	88
	-	1	1	1	-	1-455888-3	SPACER, CRIMPER	82
	-	2	2	2	-	1-21002-4	SCR, BTN SKT HD CAP 4-40 X .375	79
	-	1	1	1	-	1-189807-5	FENCE	78
	-	1	1	1	-	4088040	SF APPL INST 408-8040	72
	-	1	1	1	-	217238-1	GENERAL INSTRUCTION PKG	71
	-	2	2	2	-	21024-2	WASHER, SPRG LOCK, REG NO 4	68
	-	1	1	1	-	461264-5	PLATE, IDENTIFICATION	67
	-	2	2	2	-	21017-2	SCREW, DRIVE	66
	-	1	1	1	-	21009-2	SCR, SET, SELF LOCKING 1/4-20 X .250	63
	-	2	2	2	-	5-21006-6	SCR, SET, CUP POINT 10-32 X .750	61
	-	1	1	1	-	22733-8	SCR, BHSC, SELF-LOCKING, 8-32 X .375	60
	-	1	1	1	-	2-22603-0	SCR, HEX HD CAP 8-32 X .312	59
	-	1	1	1	-	3-694433-7	FEED PAWL	56
	-	2	2	2	-	3-21000-0	SCR, SKT HD CAP 8-32 X .875	53
	-	1	1	1	-	1583893-8	HOLDER, SLUG BLADE	50
	-	1	1	1	-	1633399-1	APPL., BASIC AIR FEED SUB ASSY	46
	-	1	1	1	-	690191-1	PLUG, NYLON	45
	-	1	1	1	-	455673-6	RAM, SIDE FEED	44
	-	1	1	1	-	7-21002-9	SCR, BTN SKT HD CAP 5/16-24 X 1.00	41
	-	1	1	1	-	690125-1	SHIM SUB-ASSY	39
	-	1	1	1	-	469367-7	SHIM	38
	-	1	1	1	-	879103-3	FINE ADJUST HEAD ASSEMBLY	37
	-	2	2	2	-	2-21002-4	SCR, BTN SKT HD CAP 8-32 X .750	33
	-	3	3	3	-	21024-5	WASHER, SPRG LOCK, REG NO 10	32
	-	1	1	1	-	3-21000-4	SCR, SKT HD CAP 10-32 X .375	31
	-	1	1	1	-	1320908-5	SPACER, STRIP GUIDE	30
	-	1	1	1	-	1-1633087-1	PLATE, STRIP GUIDE	29
	-	2	2	2	-	8-22281-7	SPRING, COMPRESSION	27
	-	1	1	1	-	356835-1	LEVER, DRAG RELEASE	26
	-	1	1	1	-	5-690754-2	DRAG, SPECIAL	25
	-	1	1	1	-	1-1320928-0	STRIP GUIDE	24
	-	1	1	1	-	22353-8	SCR, SHLD, SLOT HD, 3/16 DIA	23
	-	1	1	1	-	2-21000-7	SCR, SKT HD CAP 8-32 X .500	21
	-	2	2	2	-	21024-4	WASHER, SPRG LOCK, REG NO 8	20
	-	1	1	1	-	1-456468-4	STRIPPER, SPECIAL	19
	-	1	1	1	-	1633578-2	PLATE, REAR SHEAR	15
	-	-	-	-	-	-	-	13
	-	-	-	-	-	-	-	12
	-	1	1	1	-	1633579-2	BLADE, SLUG	10
	-	-	-	-	-	-	-	9
	-	1	1	1	-	1633610-1	ANVIL, SPECIAL	8
	-	-	-	-	-	-	-	7
	-	-	-	-	-	-	-	6
	-	1	1	1	-	4-240641-9	SPACER	5
	-	1	1	1	-	3-238009-5	BLOCK, FL CRIMPER SPACER	4
	-	1	1	1	-	1633511-8	CRIMPER, INSULATION F	3
	-	1	1	1	-	455888-2	SPACER, CRIMPER	2
	-	1	1	1	-	2-1633305-2	CRIMPER, WIRE PREMIUM	1

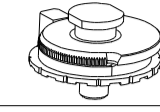


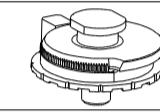
DIMENSIONS: INCHES		TOLERANCES UNLESS OTHERWISE SPECIFIED:		DRAWN: R. KNEPPER 02 JUL 2007		CHK: T. ELBIN 16 JAN 2008		APVD: N. DEMING 16 JAN 2008		NAME: N. DEMING		PRODUCT SPEC: PRODUCT SPEC		APPLICATION SPEC: APPLICATION SPEC		WEIGHT: -		MATERIAL: -		FINISH: -			
0	PLC	±		1	PLC	±0.1		2	PLC	±0.01		3	PLC	±0.001		4	PLC	±0.0001		ANGLES: ±			
CUSTOMER DRAWING												SCALE: 3:5	SHEET 1 OF 2	REV: BI									

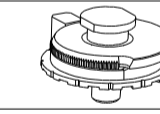
CUSTOMER VIEWABLE ASSEMBLY

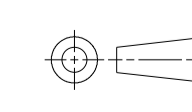
LOC	DIST	REVISIONS			
P	LTR	DESCRIPTION	DATE	DWN	APVD
A	66	SEE SHEET 1	-	-	-

TERMINAL NAME: KK® Crimp Terminal						
TE P/N	MOLEX P/N	MOLEX TERMINAL - MOLEX CRIMP SPECS				
286698-1	08-50-0113					
286698-2	08-55-0101	CRIMP HEIGHT	WIRE SIZE		REF SETTING	
286698-3	08-56-0109	.032±.001[0.81±0.03mm]	22AWG or 0.35mm ²		B8	
-	-	.030±.001[0.76±0.03mm]	24AWG or 0.20mm ²		C2	
-	-	.029±.001[0.74±0.03mm]	26AWG or 0.12mm ²		C2	
-	-	.028±.001[0.71±0.03mm]	28AWG or 0.08mm ²		C4	
-	-	.027±.001[0.69±0.03mm]	30AWG or 0.05mm ²		C6	
-	-	CRIMP	SIZE	TYPE	RANGE	
-	-	WIRE	.054 [1.37mm]	F	30-22AWG[0.05-0.35mm ²]	
-	-	INSUL	.077 [1.96mm]	F	∅.043-.062[1.09-1.57mm]	
WIRE STRIP LENGTH .100 - .125 [2.54-3.18mm]	TERM APPL SPEC NONE	FEED .900 [5.08mm]	APPLICATOR INSTRUCTIONS 408-8040		SET UP GAGE 458637-1	

TERMINAL NAME: KK® Crimp Terminal						
TE P/N	MOLEX P/N	MOLEX TERMINAL - MOLEX CRIMP SPECS				
1949741-1	08-70-0048					
1949741-2	08-70-0064	CRIMP HEIGHT	WIRE SIZE		REF SETTING	
-	-	.032±.001[0.81±0.03mm]	22AWG or 0.35mm ²		B8	
-	-	.030±.001[0.76±0.03mm]	24AWG or 0.20mm ²		C2	
-	-	.028±.001[0.71±0.03mm]	26AWG or 0.12mm ²		C4	
-	-	.027±.001[0.69±0.03mm]	28AWG or 0.08mm ²		C6	
-	-	CRIMP	SIZE	TYPE	RANGE	
-	-	WIRE	.054 [1.37mm]	F	28-22AWG[0.08-0.35mm ²]	
-	-	INSUL	.077 [1.96mm]	F	∅.047-.067[1.20-1.70mm]	
WIRE STRIP LENGTH .100 - .125 [2.54-3.18mm]	TERM APPL SPEC NONE	FEED .900 [5.08mm]	APPLICATOR INSTRUCTIONS 408-8040		SET UP GAGE 458637-1	

TERMINAL NAME: KK® Crimp Terminal						
TE P/N	MOLEX P/N	MOLEX TERMINAL - MOLEX CRIMP SPECS				
286698-4	08-52-0101					
286698-5	08-65-0815	CRIMP HEIGHT	WIRE SIZE		REF SETTING	
286698-6	08-65-0813	.032±.001[0.81±0.03mm]	22AWG or 0.35mm ²		B8	
286698-9	08-70-0046	.030±.001[0.76±0.03mm]	24AWG or 0.20mm ²		C2	
I-286698-0	08-52-0118	.028±.001[0.71±0.03mm]	26AWG or 0.12mm ²		C4	
I-286698-1	08-52-0121	.027±.001[0.69±0.03mm]	28AWG or 0.08mm ²		C6	
I-286698-2	08-50-0321	.0255±.0005[0.645±0.015]	30AWG or 0.05mm ²		C9	
I-286698-3	08-65-0804	CRIMP	SIZE	TYPE	RANGE	
I-286698-4	08-65-0801	WIRE	.054 [1.37mm]	F	30-22AWG[0.05-0.35mm ²]	
I-286698-5	08-65-0811	INSUL	.077 [1.96mm]	F	∅.043-.062[1.09-1.57mm]	
I-286698-6	08-65-0817					
I-286698-7	40-07-0815					
I-286698-8	97-00-0920					
WIRE STRIP LENGTH .100 - .125 [2.54-3.18mm]	TERM APPL SPEC NONE	FEED .900 [5.08mm]	APPLICATOR INSTRUCTIONS 408-8040		SET UP GAGE 458637-1	

TERMINAL NAME: KK® Crimp Terminal						
TE P/N	MOLEX P/N	MOLEX TERMINAL - MOLEX CRIMP SPECS				
286698-7	97-00-0444					
-	-	CRIMP HEIGHT	WIRE SIZE		REF SETTING	
-	-	.032±.001[0.81±0.03mm]	22AWG or 0.35mm ²		B8	
-	-	.030±.001[0.76±0.03mm]	24AWG or 0.20mm ²		C2	
-	-	.028±.001[0.71±0.03mm]	26AWG or 0.12mm ²		C4	
-	-	.027±.001[0.69±0.03mm]	28AWG or 0.08mm ²		C6	
-	-	.0255±.0005[0.645±0.015]	30AWG or 0.05mm ²		C9	
-	-	CRIMP	SIZE	TYPE	RANGE	
-	-	WIRE	.054 [1.37mm]	F	30-22AWG[0.05-0.35mm ²]	
-	-	INSUL	.077 [1.96mm]	F	∅.043-.062[1.09-1.57mm]	
WIRE STRIP LENGTH .100 - .125 [2.54-3.18mm]	TERM APPL SPEC NONE	FEED .900 [5.08mm]	APPLICATOR INSTRUCTIONS 408-8040		SET UP GAGE 458637-1	

<small>THIS DRAWING IS A CONTROLLED DOCUMENT FOR TYCO ELECTRONICS CORPORATION IT IS UNPUBLISHED AND NOT TO BE REPRODUCED OR TRANSMITTED IN ANY FORM OR BY ANY MEANS WITHOUT THE WRITTEN PERMISSION OF TYCO ELECTRONICS CORPORATION</small>		DWN R. KNEPPER 02JUL2007 CHK T. ELBIN 16JAN2008 APVD N. DEMING 16JAN2008	NAME STE TE Connectivity Harrisburg, PA 17105-3608
DIMENSIONS: INCHES 	TOLERANCES UNLESS OTHERWISE SPECIFIED: 0 PLC ±. 1 PLC ±0.1 2 PLC ±0.01 3 PLC ±0.001 4 PLC ±0.0001 ANGLES ±	PRODUCT SPEC APPLICATION SPEC WEIGHT	SIZE CAGE CODE DRAWING NO A 00779 C=1855289
MATERIAL: - FINISH: -		CUSTOMER DRAWING	RESTRICTED TO SCALE 3:5 SHEET 2 OF 2 REV B1