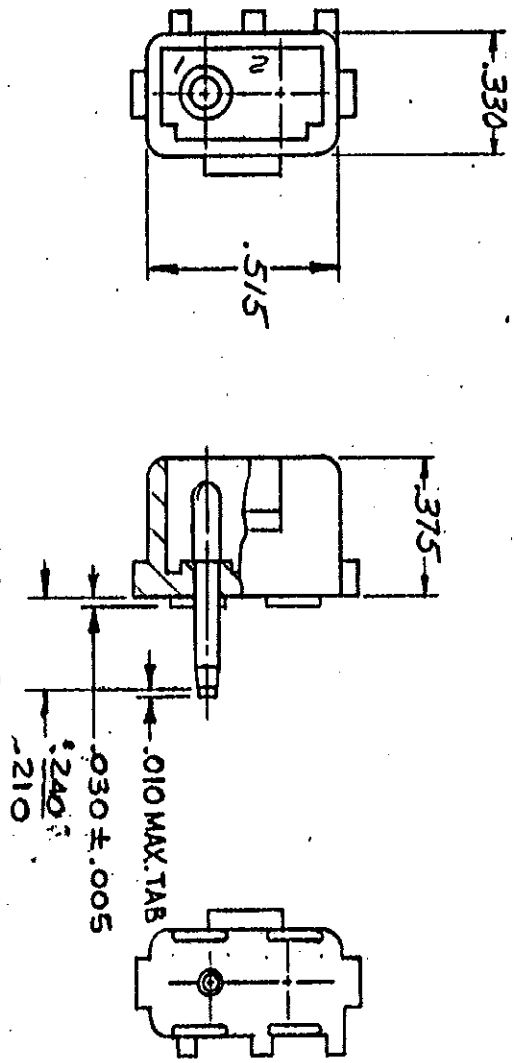


1. PARTS COMPLY WITH AMP SOLDERABILITY SPEC. NO. 109-11-3



RECOMMENDED LAYOUT FOR .125 THICK P.C. BOARD

Unpublished copy not to be reproduced without permission of AMP Incorporated.

| | | | |
|---|--------------------------|-----|----------|
| J | RESTORED | RS | 4/1/68 |
| I | REV. PER M-7375 | SM | 8/29/83 |
| H | ADDED LATE 2, M-6694 | NH | 5/11/83 |
| G | REMOVED STRIPPER, M-6543 | MSF | 11/28/81 |
| F | REMOVED STRIPPER, M-5334 | MSF | 2-17-80 |
| E | REVISED M-4161 | MF | 6/24/79 |
| D | ECN M-3871 | MS | 3-27-77 |
| C | ECN M-3452 | MS | 9-7-76 |
| B | ECN M-2152 | MS | 7/9/76 |
| A | ECN M-2152 | MS | 7/9/76 |

| | |
|-------------|--------|
| NUMBER | 350540 |
| DESCRIPTION | |

| | | | |
|--|------------------|-------------------|----------------------|
| ASSEMBLY NO. | 350540-1 | NYLON - NATURAL | COPPER ALLOY PRE-TIN |
| ASSEMBLY NO. | HSG MATL & COLOR | PIN MATL & FINISH | |
| © 1973 AMP INCORPORATED. ALL RIGHTS RESERVED. AMP PRODUCTS COVERED BY PATENTS AND/OR PATENTS PENDING. DR. 9. Edman 5-23-73 CHK. M. R. B. 1/1/73 DE. M. R. B. 4-10-73 APP. M. R. B. 4-10-73 MATERIAL AND FINISH: SEE TABLE WIRE RANGE - INSULATION: H TOLERANCE EXCEPT AS NOTED: ± 10% CLASS: .084 DIA. PIN TYPE: POSITIVE LOCK LOC: CM B NO: 350540. L NAME: 2 CIRCUIT MATEN-LOK P.C. BOARD HEADER | | | |

