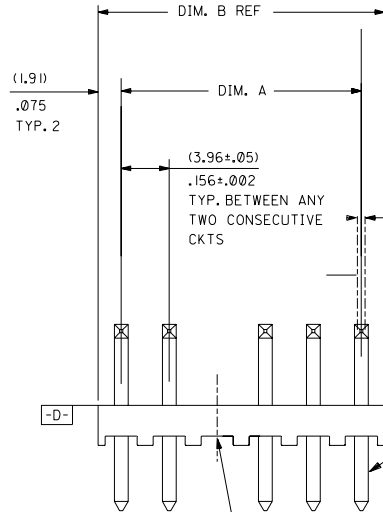
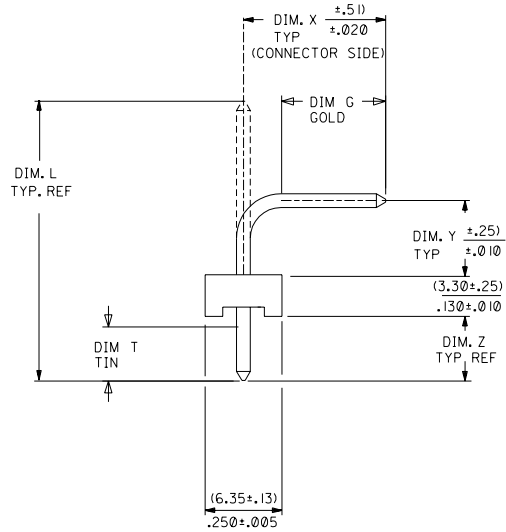


RECOMMENDED PC BOARD HOLE LAYOUT  
FOR CORRECT ORIENTATION OF PARTS WITH  
VOIDS ELIMINATE CORRESPONDING PCB HOLE



CENTERLINE OF PIN AT TIP  
NOT TO VARY FROM  
CENTERLINE OF PIN AT DATUM -D-  
BY MORE THAN .008 IN EITHER DIRECTION

(1.14)  
.045 SQ. PINS

CENTERLINE OF PIN AT TIP  
NOT TO VARY FROM  
CENTERLINE OF PIN AT DATUM -D-  
BY MORE THAN .005 IN ANY DIRECTION

VOIDED CKT.  
SEE CHART FOR LOCATION

NO. OF CKT'S.	DIM. A	DIM. B
2	(3.96 ± .05) .156 ± .002	(7.77) .306
3	(7.92 ± .08) .312 ± .003	(11.73) .462
4	(11.89 ± .08) .468 ± .003	(15.70) .618
5	(15.85 ± .10) .624 ± .004	(19.66) .774
6	(19.81 ± .10) .780 ± .004	(23.62) .930
7	(23.77 ± .10) .936 ± .004	(27.58) 1.086
8	(27.74 ± .13) 1.092 ± .005	(31.55) 1.242
9	(31.70 ± .13) 1.248 ± .005	(35.51) 1.398
10	(35.66 ± .13) 1.404 ± .005	(39.47) 1.554
11	(39.62 ± .15) 1.560 ± .006	(43.43) 1.710
12	(43.59 ± .15) 1.716 ± .006	(47.40) 1.866
13	(47.55 ± .15) 1.872 ± .006	(51.36) 2.022
14	(51.51 ± .18) 2.028 ± .007	(55.32) 2.178
15	(55.47 ± .18) 2.184 ± .007	(59.28) 2.334
16	(59.44 ± .18) 2.340 ± .007	(63.25) 2.490
17	(63.40 ± .20) 2.496 ± .008	(67.21) 2.646
18	(67.36 ± .20) 2.652 ± .008	(71.17) 2.802

NOTES:

- PRECEDING ENG. NO. IN CHART DESIGNATES STANDARD PRODUCT.
- SOLDERABILITY: WHEN PARTS ARE SOLDERED AT A TEMPERATURE OF 230°C (446°F) FOR 5 SECONDS, EACH SOLDERED SURFACE SHALL BE A MINIMUM OF 95% COVERED WITH A SMOOTH CONTINUOUS ADHERENT COATING. FOR OTHER INFORMATION SEE ES-152.
- PIN PUSH OUT FORCE: PRIOR TO SOLDERING, A 3 POUND MINIMUM FORCE (IN EITHER DIRECTION) SHALL BE REQUIRED TO PUSH THE PIN OUT OF THE HEADER.
- FOR ADDITIONAL INFORMATION AND TESTING PROCEDURES SEE PS-08-50.
- PARTS ARE STACKABLE END TO END ON (3.96)/.156 CENTERS.
- FOR PART WITH PEG SEE DWG. NO. SDA-42472

MATERIAL: HEADER: GLASS FILLED POLYESTER, 94V-0, MOLDED NATURAL (WHITE).  
PIN: BRASS

PLATINGS:

(102) ELECTRO TIN .000450/.000200 OVER .000200/.000100 COPPER  
(567) SELECT GOLD 15 M.I. MIN SELECT TIN/LEAD 100 M.I. MIN OVER NICKEL OVERALL  
(569) SELECT GOLD 30 M.I. MIN SELECT TIN/LEAD 100 M.I. MIN OVER NICKEL OVERALL  
FOR ADDITIONAL INFORMATION SE SDES-88.

REL 0588/0604 UCR2002-0752 03/11/02 SAMIEC		DIMENSIONS SHOWN (METRIC) INCH UNLESS OTHERWISE SPECIFIED TOLERANCES: ANGULAR ± 1/2°		□ = 0   ▽ = 0   REVISE ONLY ON CAD SYSTEM	
REV TO WW SPEC UCR2002-0077 7/25/01 SAMIEC		3 PLACE ±   INCH   METRIC 2 PLACE ±   ± 1 PLACE ±   ±		TITLE FLAT HEADER ASS'Y .156 @ BENT SQ PINS, W/O PEG 41772 SERIES DRAWING	
REL 0574/0587 UCR2001-0262 9-19-00 SAMIEC		DRAFT WHERE APPLICABLE MUST REMAIN WITHIN DIMENSIONS		MOLEX INCORPORATED   SHEET NO.   DATE LISLE, ILL.   60532   U.S.A.   1 OF 6   09/09/87	
DRWG. BY SAMIEC   CHK'D. BY PATEL		PART NO.   DRWG. NO.		SEE CHART   SDA-41772	
APP'D. BY LENZ   SCALE :		FILE NAME S41772X1		THIS DRAWING CONTAINS INFORMATION THAT IS PROPRIETARY TO MOLEX INC. AND SHOULD NOT BE USED WITHOUT WRITTEN PERMISSION.	
LTR.	REVISIONS	LTR.	REVISIONS	APP'D. BY	SIZE

6	HI
5	H
4	H
3	H
2	H
1	HI

41772

	13	12	11	10	9	8	7	6	41772	4	3	2	1	
	ENG. NO.	HEADER NO.	PIN NO.	PLATING	DIM. L	DIM. X	DIM. G GOLD	DIM. Y	DIM. Z	DIM. T TIN	DIM. W	NO OF CKTS	VOID CKTS	PACKAGING
J	A-41772-0368/0377	41770-0009/0018	2161-16(102)	102	(25.40) 1.000	(14.86) .585	( ) N/A	(4.95 ) .195	(3.56 ) .140	( ) OVERALL	90°	9-18	9	BULK PER PK-41772-002
	A-41772-0378/0394	41770-0002/0018	2161--56(102) *	102	(17.86) .703	(5.94 ) .234	( ) N/A	(4.90 ) .193	(4.45 ) .175	( ) OVERALL	90°	2-18		BULK PER PK-41772-001
	A-41772-0412/0428	41770-0002/0018	2161-63(102) *	102	(24.38) .960	(15.06) .593	( ) N/A	(2.71 ) .107	(4.06 ) .160	( ) OVERALL	90°	2-18		BULK PER PK-41772-001
I	A-41772-0429/0445	41770-0002/0018	2161-67(102) *	102	(18.69) .736	(10.48) .413	( ) N/A	(2.71 ) .107	(2.92 ) .115	( ) OVERALL	90°	2-18		BULK PER PK-41772-001
	A-41772-0446/0462	41770-0002/0018	2161-2(1501)	501	(28.57) 1.125	(17.60) .693	( ) OVERALL	(4.95 ) .195	(3.99 ) .157	( ) N/A	90°	2-18		BULK PER PK-41772-002
	A-41772-0531/0547	41770-0002/0018	2161-62(102)	102	(24.89) .980	(14.86) .585	( ) N/A	(4.95 ) .195	(3.05 ) .120	( ) OVERALL	90°	2-18		BULK PER PK-41772-002

\* ON ASSEMBLIES A-41772-0378 / -0445 THE PIN BEND RADIUS IS TO BE .045 R

A-41772-0368/0377			A-41772-0378/0394			A-41772-0412/0428			A-41772-0429/0445			A-41772-0446/0462			A-41772-0531/0547		
EDP NO.	ENG. NO.	NO OF CKTS	EDP NO.	ENG. NO.	NO OF CKTS	EDP NO.	ENG. NO.	NO OF CKTS	EDP NO.	ENG. NO.	NO OF CKTS	EDP NO.	ENG. NO.	NO OF CKTS	EDP NO.	ENG. NO.	NO OF CKTS
		2	26-60-3029	A-41772-0378	2	27-60-3020	A-41772-0412	2		A-41772-0429	2	27-60-3022	A-41772-0446	2	41772-0531	A-41772-0531	2
		3	26-60-3039	A-41772-0379	3		A-41772-0413	3		A-41772-0430	3	27-60-3032	A-41772-0447	3	41772-0532	A-41772-0532	3
		4	26-60-3049	A-41772-0380	4		A-41772-0414	4		A-41772-0431	4	27-60-3042	A-41772-0448	4	41772-0533	A-41772-0533	4
		5	26-60-3059	A-41772-0381	5		A-41772-0415	5		A-41772-0432	5	27-60-3052	A-41772-0449	5	41772-0534	A-41772-0534	5
		6	26-60-3069	A-41772-0382	6		A-41772-0416	6	27-60-3061	A-41772-0433	6	27-60-3062	A-41772-0450	6	41772-0535	A-41772-0535	6
		7	26-60-3079	A-41772-0383	7	27-60-3070	A-41772-0417	7	27-60-3071	A-41772-0434	7	27-60-3072	A-41772-0451	7	41772-0536	A-41772-0536	7
		8	26-60-3089	A-41772-0384	8		A-41772-0418	8		A-41772-0435	8	27-60-3082	A-41772-0452	8	41772-0537	A-41772-0537	8
	A-41772-0368	9	26-60-3099	A-41772-0385	9		A-41772-0419	9		A-41772-0436	9	27-60-3092	A-41772-0453	9	41772-0538	A-41772-0538	9
	A-41772-0369	10	26-60-3109	A-41772-0386	10		A-41772-0420	10		A-41772-0437	10	27-60-3102	A-41772-0454	10	41772-0539	A-41772-0539	10
	A-41772-0370	11	26-60-3119	A-41772-0387	11		A-41772-0421	11		A-41772-0438	11	27-60-3112	A-41772-0455	11	41772-0540	A-41772-0540	11
	26-62-3125	A-41772-0371	26-60-3129	A-41772-0388	12		A-41772-0422	12		A-41772-0439	12	27-60-3122	A-41772-0456	12	41772-0541	A-41772-0541	12
		A-41772-0372	26-60-3139	A-41772-0389	13		A-41772-0423	13		A-41772-0440	13	27-60-3132	A-41772-0457	13	41772-0542	A-41772-0542	13
		A-41772-0373	26-60-3149	A-41772-0390	14		A-41772-0424	14		A-41772-0441	14	27-60-3142	A-41772-0458	14	41772-0543	A-41772-0543	14
		A-41772-0374	26-60-3159	A-41772-0391	15		A-41772-0425	15		A-41772-0442	15	27-60-3152	A-41772-0459	15	41772-0544	A-41772-0544	15
		A-41772-0375	26-60-3169	A-41772-0392	16		A-41772-0426	16		A-41772-0443	16	27-60-3162	A-41772-0460	16	41772-0545	A-41772-0545	16
		A-41772-0376	26-60-3179	A-41772-0393	17		A-41772-0427	17		A-41772-0444	17	27-60-3172	A-41772-0461	17	41772-0546	A-41772-0546	17
		A-41772-0377	26-60-3189	A-41772-0394	18		A-41772-0428	18		A-41772-0445	18	27-60-3182	A-41772-0462	18	41772-0547	A-41772-0547	18

H	SEE SHEET I	D	SEE SHEET I	DIMENSIONS SHOWN (METRIC) INCH UNLESS OTHERWISE SPECIFIED TOLERANCES ANGULAR ± 1/2° INCH METRIC 3 PLACE ± ± 2 PLACE ± ± 1 PLACE ± ± DRAFT WHERE APPLICABLE MUST REMAIN WITHIN DIMENSIONS DRWG. NO. SDA-41772 FILE NAME S41772X5 THIS DRAWING CONTAINS INFORMATION THAT IS PROPRIETARY TO MOLEX INC. AND SHOULD NOT BE USED WITHOUT WRITTEN PERMISSION.
G	SEE SHEET I	C	SEE SHEET I	
F1	SEE SHEET I	B	SEE SHEET I	
F	SEE SHEET I	A19	SEE SHEET I	
E14	SEE SHEET I	A17	SEE SHEET I	
E13	SEE SHEET I	A14	SEE SHEET I	
E12	SEE SHEET I	A13	SEE SHEET I	
LTR.	REVISIONS	LTR.	REVISIONS	