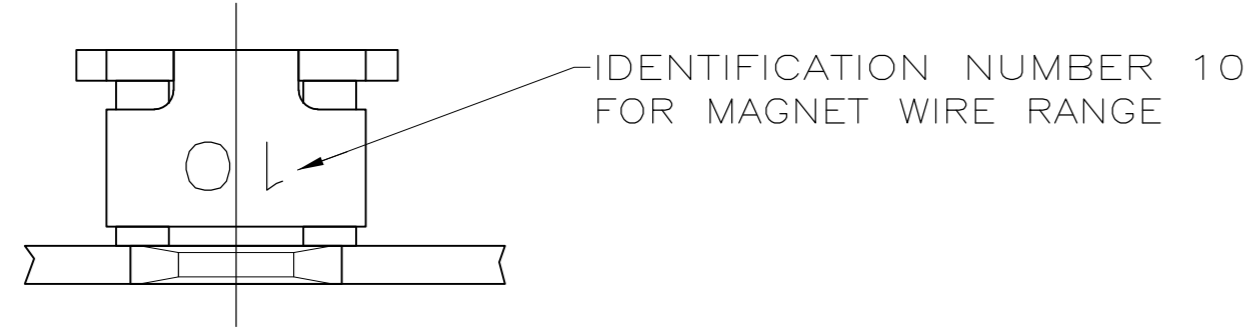
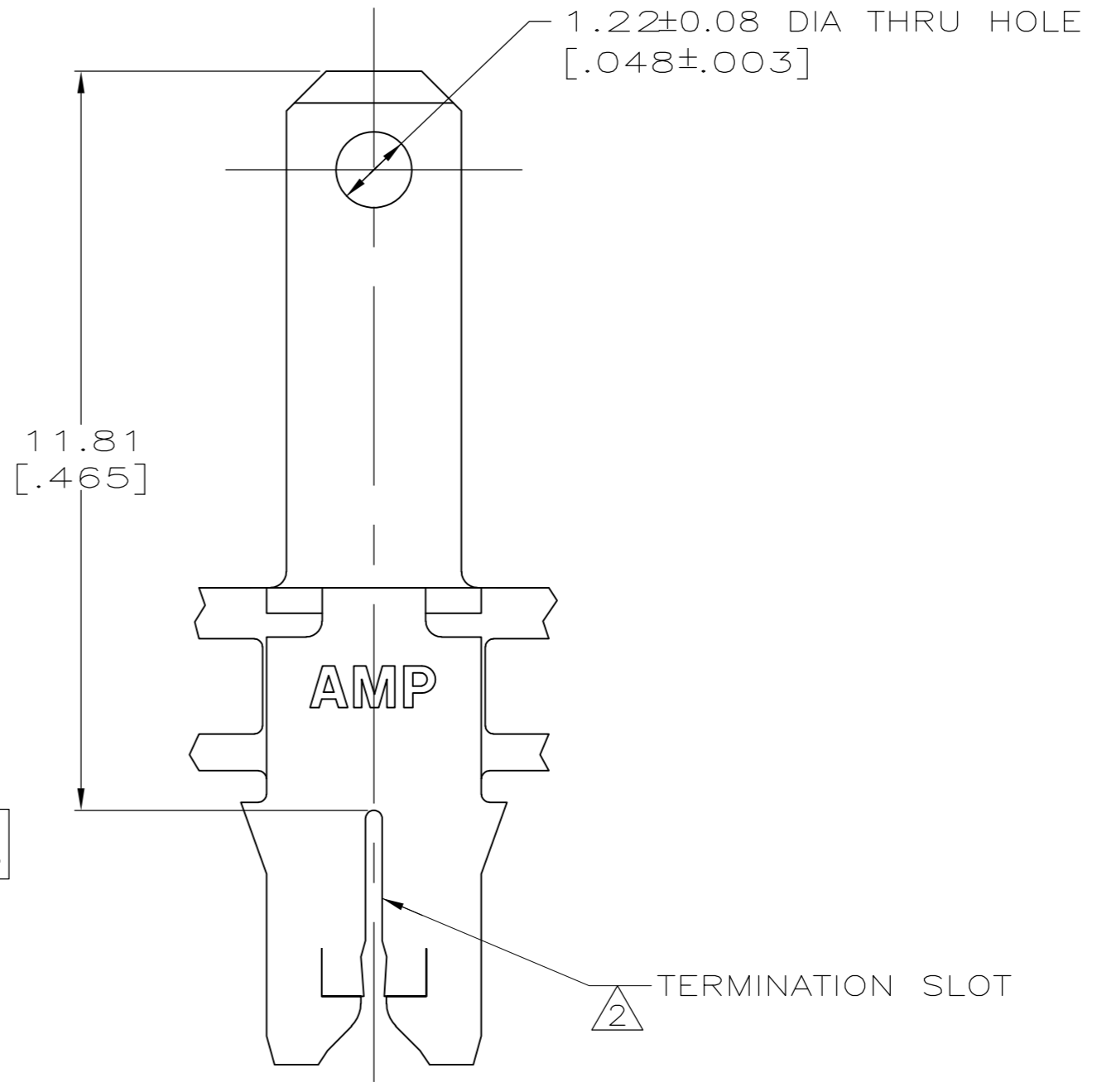
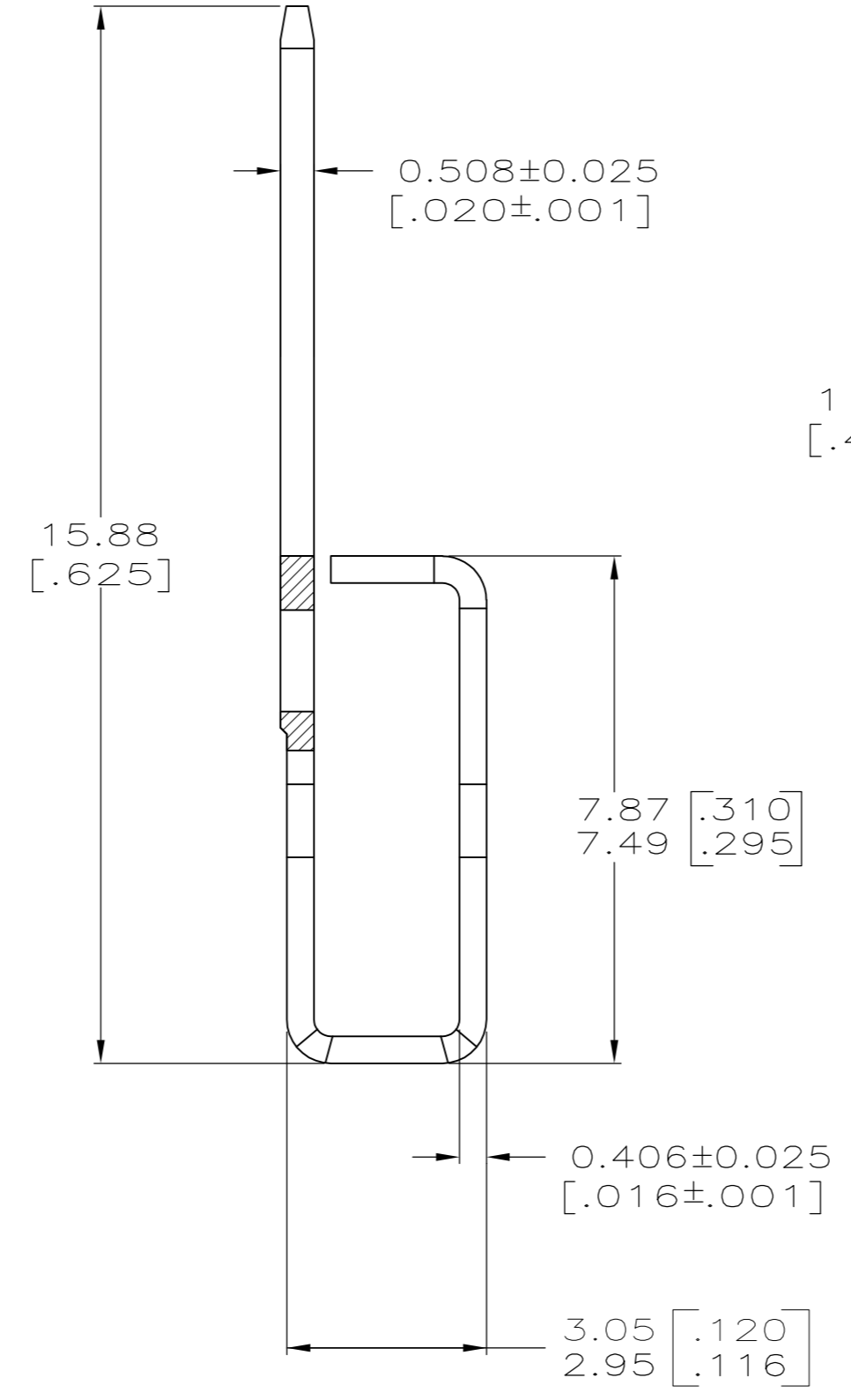
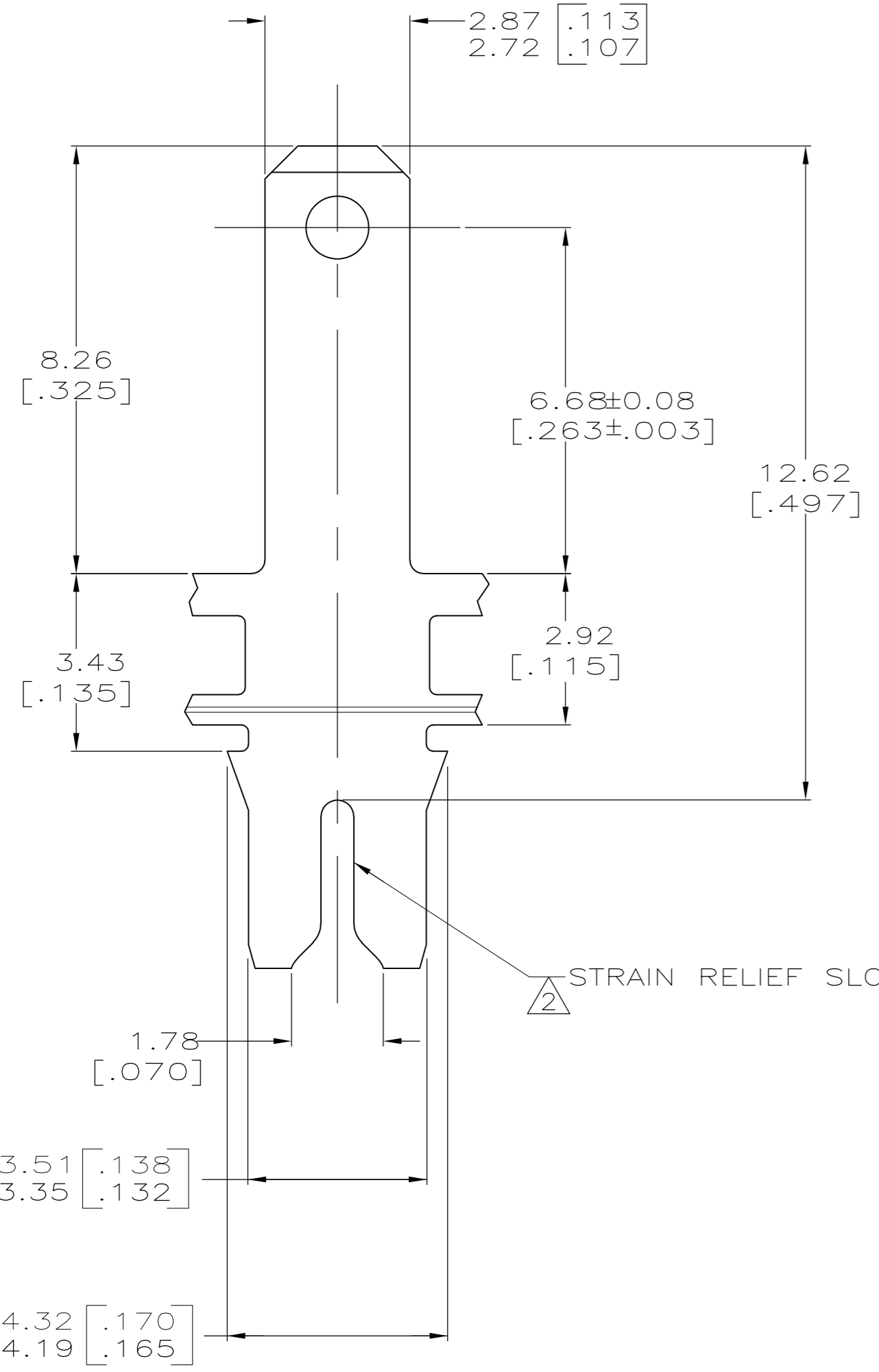


THIS DRAWING IS UNPUBLISHED. RELEASED FOR PUBLICATION
 © COPYRIGHT BY TYCO ELECTRONICS CORPORATION. ALL INTERNATIONAL RIGHTS RESERVED.

LOC	DIST	REVISIONS			
P	LTR	DESCRIPTION	DATE	DWN	APVD
AF	50	B1	ECR-15-005665	10AUG2015	BDA PKS



1 CONTINUOUS STRIP ON REELS WITH TERMINALS LOCATED ON 5.59±0.08 [.220±.003] CENTERS.
 2 SLOT TERMINATES A SINGLE MAGNET WIRE ONLY.
 COPPER RANGE: 0.36-0.57mm [#27-#23] AWG.
 ALUMINUM RANGE: 0.51-0.64mm [#24-#22] AWG.
 ALUMINUM WIRE RANGE APPLIES FOR POST-TIN PLATED VERSIONS ONLY.



63827-1
 PART NO.

THIS DRAWING IS A CONTROLLED DOCUMENT.		DWN R.GRZYBOWSKI 10/FEB/95	STE TE connectivity	
DIMENSIONS: MM [INCHES]		CHK PHILLIP M. FORTNEY 10/FEB/95		
TOLERANCES UNLESS OTHERWISE SPECIFIED:		APVD MS.FEHER 10/FEB/95	NAME	
0 PLC ± -		PRODUCT SPEC	108-2012	
1 PLC ± -		APPLICATION SPEC	114-2046	
2 PLC ± 0.25 [.010]		WEIGHT	-	
3 PLC ± -		FINISH	TIN PLATE	
4 PLC ± -		SCALE	10:1	
ANGLES ± -		SHEET	1 of 1	
MATERIAL 4M PRE-MILLED BRASS		CUSTOMER DRAWING	SIZE A2	RESTRICTED TO -
			CAGE CODE 00779	REV B1
			DRAWING NO. C=63827	