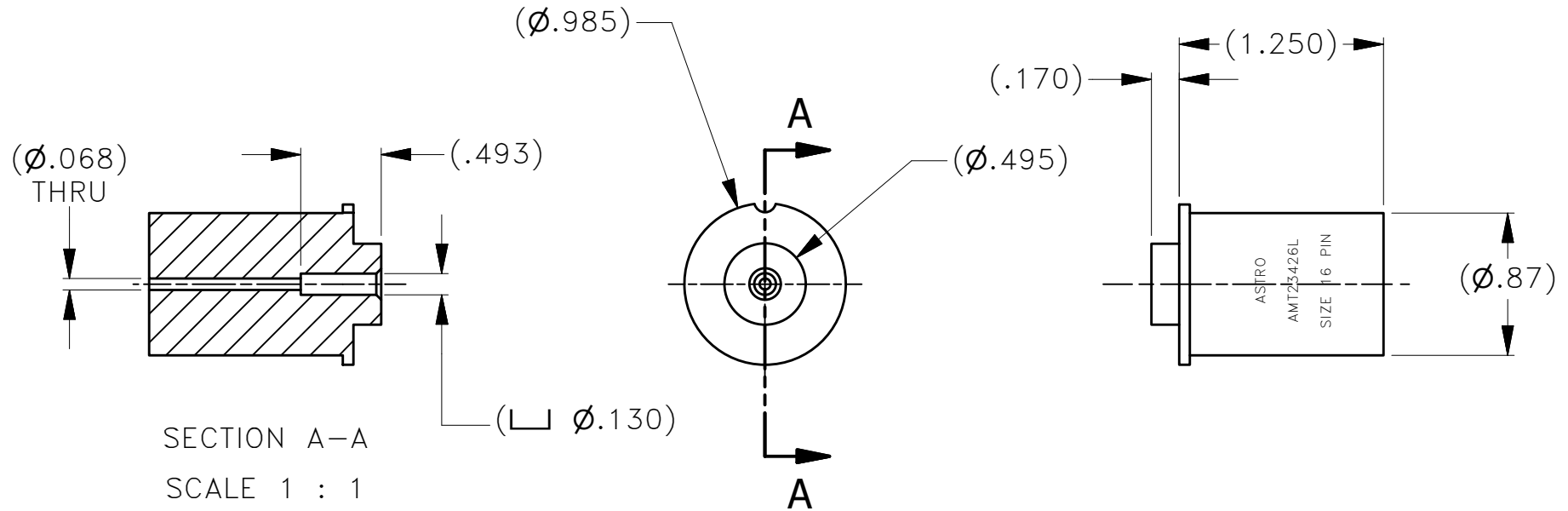



**UNCONTROLLED DOCUMENT  
WILL NOT BE UPDATED**

REVISIONS		AMT23426L-ENV		
REV SYM	ECO NUMBER	DESCRIPTION	BY DATE	APP'D DATE
A		NEW RELEASE	DYO 08-12-13	MMK 08-12-13



NOTES:

1. THIS IS AN ICAD DRAWING. DO NOT CHANGE MANUALLY.

MATERIAL	ITEM	PART NO.	QTY.	DESCRIPTION/REMARKS
ALUMINUM	DRN. DYO	DATE 08-12-13		CAGE 58164
	CHK'D. MMK	DATE 08-12-13		 ASTRO TOOL CORP. 21615 S.W. TUALATIN VALLEY HWY., BEAVERTON OR 97006
HEAT TREAT N/A	APP'D.	DATE		TITLE ENVELOPE DRAWING, AMT23426L LOCATOR, #16 PIN
	APP'D.	DATE		WHERE USED:
FINISH PLATINUM ANODIZE	TOLERANCE: UNLESS OTHERWISE SPECIFIED FRACTIONS ± 1/32 ANGLES ± 1° DECIMAL INCHES: .X ± .030 .XX ± .010 .XXX ± .005 .XXXX ± .0005 REMOVE BURRS AND BREAK SHARP EDGES .005-.015		SIZE A	SCALE N/A
CREATED FROM AN INVENTOR MODEL. CHANGES MUST BE REFLECTED IN THE 3D PART			CAD P/N AMT23426L-ENV_RA	SHEET OF 10F1
DO NOT SCALE DRAWING			POSTING	P/N AMT23426L-ENV
				REV. A