

Inventek Systems



Inventek Systems

Embedding Connectivity Everywhere

eS-WiFi

ISM43362-M3G-EVB

Quick Start Guide

Installing the Inventek Systems ISM43362-M3G-EVB Evaluation Board

1. BEFORE you plug the board into your computer download and install the eS-WiFi PC demo software and Drivers:

http://www.inventeksys.com/wp-content/uploads/Inventek_Systems_eS-WiFiDemo_v1.4_b2.zip

2. Save the eS-Wifi Demo.zip.
3. Unzip.
4. Run as Administrator.
 - a. The board has two com ports. USB-JTAG and Broadcom USB serial port
 - b. Use the Broadcom USB serial port as indicated by the arrow in the above photo of the EVB.



The ISM43362-M3G-EVB connects to the PC with a USB cable. The USB interface provides +5V power as well as individual programming and UART interfaces to the STM32F205 host processor (on the ISM43362-M3G-L44 module).

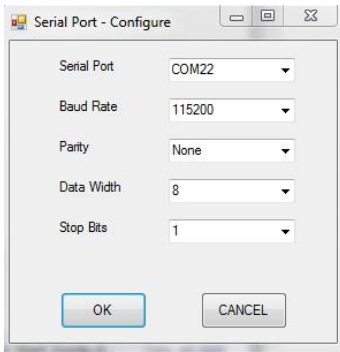
The USB driver for the ISM43362-M3G-EVB Evaluation Board is provided in the above download. Once you install the above software you can select Menu>Install Drivers on the eS-WiFi Demo to pre-install the drivers then plug-in the board.

Open the following documents to start testing:

- a. [EVB Users Manual.pdf](#)
- b. [AT Command Set Quick Reference Guide](#)
- c. [AT Command Set User's Manual](#)

We recommend that you use the eS-WiFi [Demo Software Help](#), that will explain the driver installation. (Manual installation instructions are also shown in the appendix of this document.)

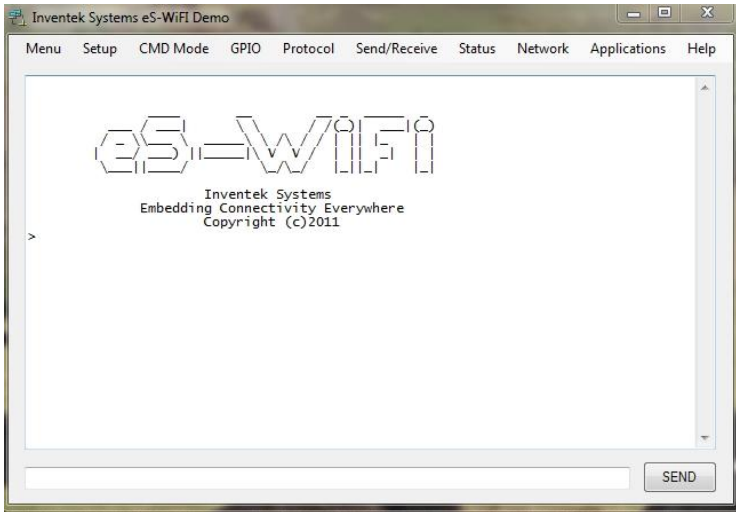
5. Use the eS-WiFi demo software setup menu to configure the UART. (Setup – Serial Port – Configure/Open)



- a. Identify serial Com port from Device Manager , e.g. COM22
- b. Set Baud rate to 115,200
- c. 8 Data bits, 1 Stop bit , Parity None, and Flow control None

(The other option is to use a terminal program such as Hyper-terminal, PuTTY (<http://putty.org>) or similar program on your PC.)

6. Press the reset button on the ISM43362-M3G-EVB evaluation board and the following will appear:



7. The AT Command interpreter is loaded on the ISM43362-M3G-EVB.
Type ? to view the available commands.
8. For additional information refer to the following documentation from Inventek Systems:
 - ISM43362-M3G-EVB Evaluation Board Specification
 - AT Command set
 - eS-WiFi Demo software (includes EVB Drivers)
 - EVB Users Guide
 - Quick Start Guide
 - OrCAD Schematic Symbol
 - PADS Land Pattern
 - ISM43362-M3G-L44 Functional Specification
 - FCC Test Report
 - NDA/ SLA documents

Appendix: Manual Installation Instructions:

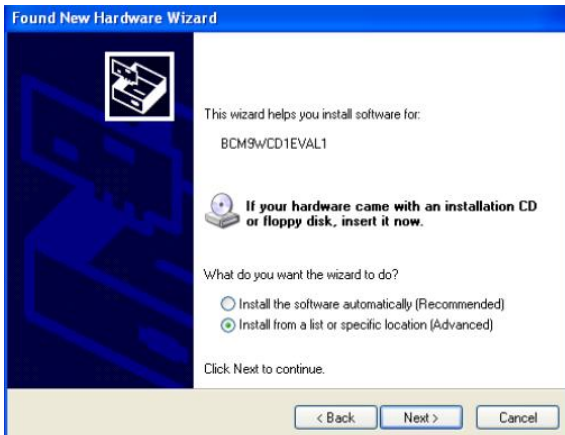
NOTE: Driver installation occurs in THREE stages, each stage is described in the following text.



Plug the ISM43362-M3G-EVB into the development PC. The Found New Hardware Wizard window appears.

Now perform the follow actions:

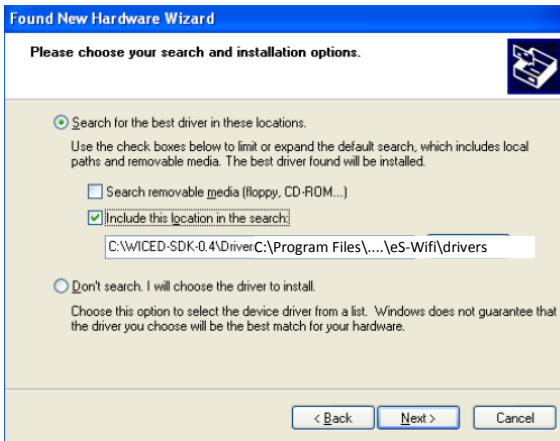
- Select the checkbox : No, not this time



- Click Next.

In the next window, perform the following actions.

- Verify that the driver installation is for BCM9WCD1EVAL1
- Select the checkbox : Install from a list or specified location (Advanced).
- Click Next

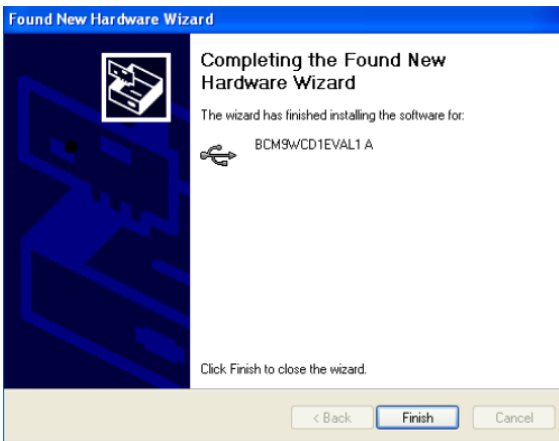


In the next window, perform the following actions.

- Check the radio button : Search for the best driver in these locations
- Click the checkbox : Include this location in the search:
- Enter the path to the directory : C:\Program Files\Inventek Systems\eS-WiFi\drivers
- Click Next

A further window displays indicating that the driver has been installed for the BCM9WCD1EVAL1 A device (corresponding to the USB-JTAG device). There are two devices on the BCM9WCD1EVAL1 board, a USB-JTAG device (device A) and a USB-UART device (device B).

- Click Finish

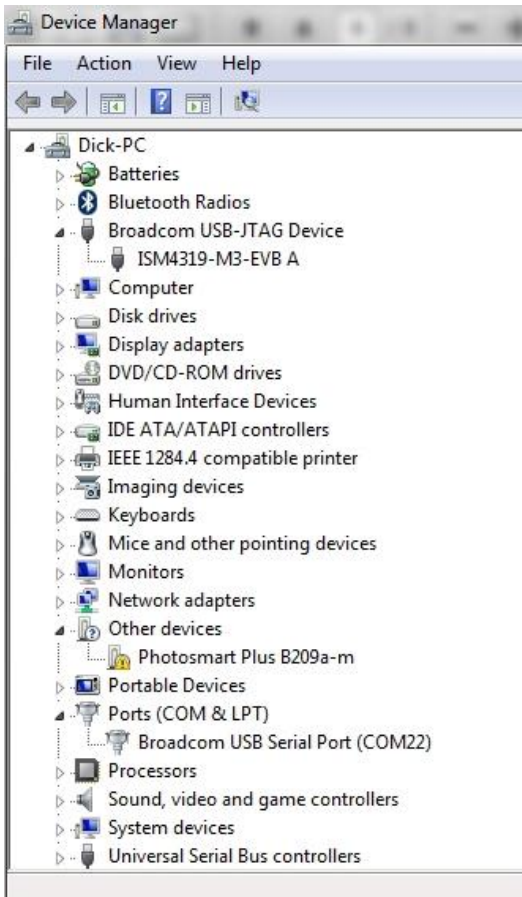


After a short delay, another Found New Hardware Wizard window opens. Install the driver for the BCM9WCD1EVAL1 B device using the same procedure as the BCM9WCD1EVAL1 A device. If a Windows Logo Testing window appears, click Continue anyway.

Once the BCM9WCD1EVAL1 B device driver is installed, a serial port driver must be installed. The serial port driver makes the USB-Serial interface appear to Windows® as a standard COM port. Follow the same procedure outlined for the BCM9WCD1EVAL1 A and B devices to install the serial port driver. Again, if a Windows Logo Testing window appears, click Continue anyway.

After the driver is successfully installed, a Broadcom USB-JTAG Device and a Broadcom USB Serial Port appear in the Windows® Device Manager as shown in the following screen capture. Take note of the USB serial COM port number for later use (it may not be COM3).

Note: The Hardware Device Manager may be accessed quickly from the System Properties window by simultaneously pressing the Windows + Pause keys.





Inventek Systems
2 Republic Road
Billerica, MA 01862
www.inventeksys.com