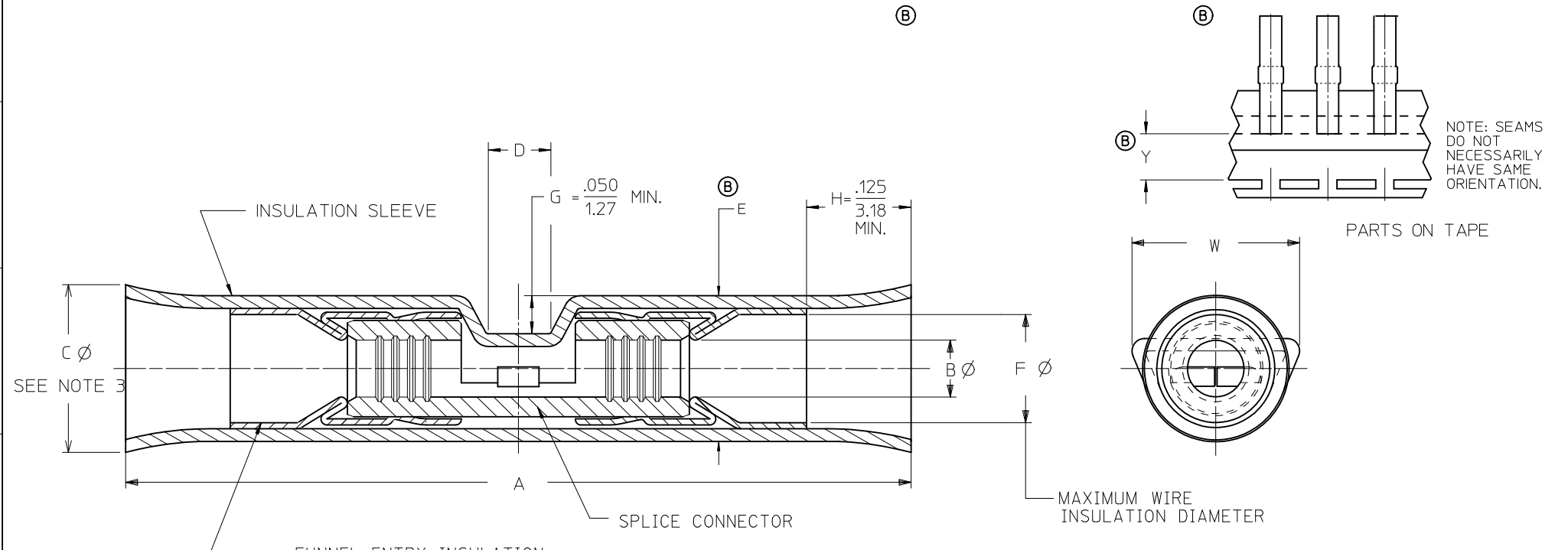


LOOSE PIECE		TAPE MOUNTED		WIRE AWG	INSUL COLOR	DIMENSIONS								
MATERIAL NO.	ENGINEERING P/N	MIL-T-7928/5 PART NO.	MATERIAL NO.			ENGINEERING P/N	A MAX.	B	ⓐ C	D MIN.	E	F MIN.	W MAX.	Y NOMINAL
191990007	WA-840	M7928/5-3	191990008	WA-840T	22-18	RED	1.300/(33.02)	.052 TO .073 (1.32 TO 1.85)	.160 TO .220 (4.06 TO 5.59)	.08/(2.0)	.160 TO .210 (4.06 TO 5.33)	.11/(2.8)	.250/(6.35)	.48/(12.1)
191990009	WB-841	M7928/5-4	191990010	WB-841T	16-14	BLUE	1.300/(33.02)	.081 TO .095 (2.06 TO 2.41)	.180 TO .260 (4.57 TO 6.60)	.08/(2.0)	.180 TO .250 (4.57 TO 6.35)	.14/(3.6)	.290/(7.37)	.49/(12.4)
191990011	WC-842	M7928/5-5	-	-	12-10	YELLOW	1.700/(43.18)	.129 TO .139 (3.28 TO 3.53)	.250 TO .320 (6.35 TO 8.13)	.11/(2.8)	.250 TO .310 (6.35 TO 7.87)	.20/(5.1)	.340/(8.64)	-



- NOTES:
- MATERIAL
INSULATION: TRANSPARENT NYLON
FERRULE: TIN PLATED COPPER ALLOY
CONNECTOR: TIN PLATED COPPER
 - PARTS ARE ROHS COMPLIANT.
 - ⓐ FLARE PERMISSIBLE, NOT REQUIRED.

ALLOW FLARE MATCH MIL EC NO: WNA2011-0273 DRW: WETHRODAHL 2010/11/18 CHKD: JMACNEIL 2010/11/19 APPR: JMACNEIL 2010/12/02	QUALITY SYMBOLS ▽=0 ▽7=0	GENERAL TOLERANCES (UNLESS SPECIFIED) mm INCH 4 PLACES ± --- ± --- 3 PLACES ± --- ± --- 2 PLACES ± --- ± --- 1 PLACE ± --- ± --- ANGULAR ± ---°	DIMENSION STYLE IN/MM	SCALE ---	DESIGN UNITS INCH	THIRD ANGLE PROJECTION
	DRAWN BY DATE RCM 1993/03/04	TITLE AVIKRIMP WINDOW BUTT SPLICE				
	CHECKED BY DATE JM 1993/03/04	APPROVED BY DATE JMACNEIL 2010/12/02				
	MATERIAL NO. SEE CHART	DOCUMENT NO. SD-19199-003			SHEET NO. 1 OF 1	

DRAFT WHERE APPLICABLE MUST REMAIN WITHIN DIMENSIONS

THIS DRAWING CONTAINS INFORMATION THAT IS PROPRIETARY TO MOLEX INCORPORATED AND SHOULD NOT BE USED WITHOUT WRITTEN PERMISSION