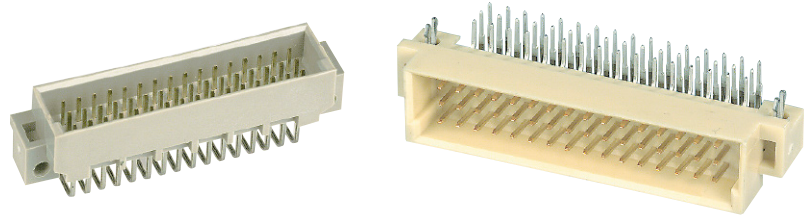


Number of contacts

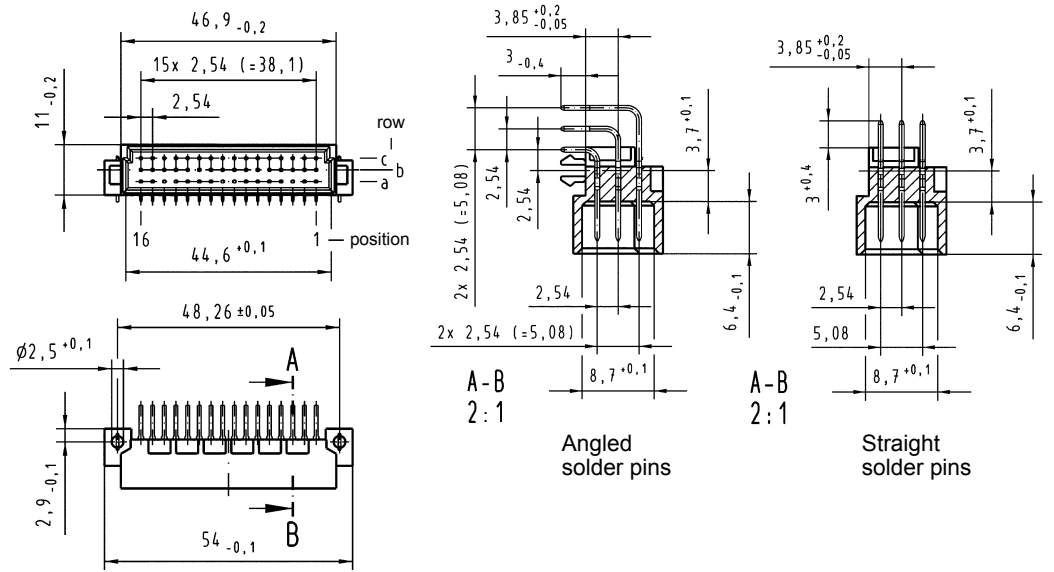
48, 32, 16



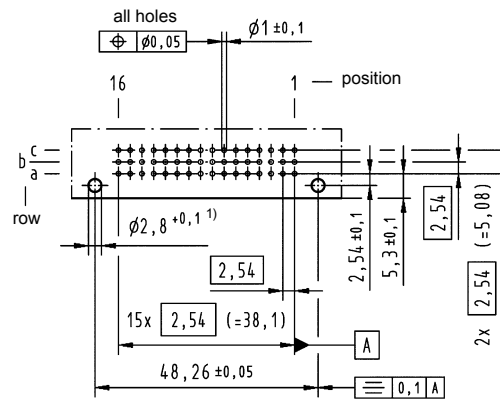
Male connectors

Identification Drawing Dimensions in mm

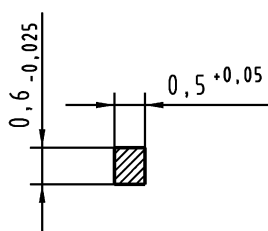
Dimensions



Board drillings
Mounting side



Cross section of solder terminations



Cross area (A) of contacts row a, b, c: A = 0.29 - 0.33 mm²

DIN Signal up to 2 A

01
30

¹⁾ Recommendation for variants with clip: Drillings can be enlarged up to 3.1 mm ø to reduce standard mounting force