

**ZWS75BAF/L**

SPECIFICATIONS

A248-01-01/L-A

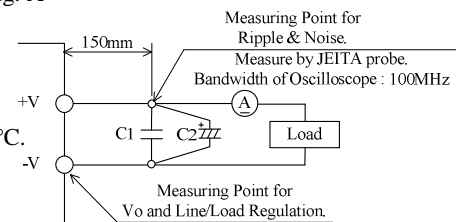
ITEMS		MODEL	ZWS75BAF -3/L	ZWS75BAF -5/L	ZWS75BAF -12/L	ZWS75BAF -15/L	ZWS75BAF -24/L	ZWS75BAF -48/L	
1	Nominal Output Voltage	V	3.3	5	12	15	24	48	
2	Maximum Output Current	A	15	15	6.3	5.0	3.2	1.6	
3	Maximum Output Power	W	49.5	75.0	75.6	75.0	76.8	76.8	
4	Efficiency (Typ.) (*1)	100VAC	%	76	82	83	84	84	85
		200VAC	%	78	84	85	86	87	88
5	Input Voltage Range (*2)	-	85 - 265VAC (47 - 63Hz) or 120 - 370VDC						
6	Input Current (Typ.) (*1)	A	0.70/0.35	0.95/0.5					
7	Inrush Current (Typ.) (*1)(*3)	-	14A at 100VAC, 28A at 200VAC, Ta=25°C, Cold Start						
8	PFHC	-	Designed to meet IEC61000-3-2						
9	Power Factor (Typ.) (*1)	-	0.96/0.85	0.97/0.91					
10	Output Voltage Range	V	2.97 - 3.63	4.5 - 5.5	10.8 - 13.2	13.5 - 16.5	21.6 - 26.4	39.5 - 52.8	
11	Maximum Ripple & Noise (*4)	0≤Ta≤70°C	mV	120	120	150	150	150	200
		-10≤Ta<0°C	mV	160	160	180	180	180	240
12	Maximum Line Regulation (*4)(*5)	mV	20	20	48	60	96	192	
13	Maximum Load Regulation (*4)(*6)	mV	40	40	96	120	150	240	
14	Temperature Coefficient (*4)	-	Less than 0.02% / °C						
15	Over Current Protection (*7)	A	15.7-	15.7-	6.61-	5.25-	3.36-	1.68-	
16	Over Voltage Protection (*8)	V	3.79 - 4.95	5.75 - 7.0	13.8 - 16.2	17.3 - 20.3	27.6 - 32.4	55.2 - 64.8	
17	Hold-up Time (Typ.) (*1)	-	20ms						
18	Leakage Current (*9)	-	Less than 0.5mA, 0.2mA(Typ.) at 100VAC / 0.4mA(Typ.) at 230VAC						
19	Remote Control	-	-						
20	Parallel Operation	-	-						
21	Series Operation	-	Possible						
22	Operating Temperature (*10)	-	Convection : -10 - +70°C (-10 - +50°C:100%, +60°C:75%, +70°C:50%)						
23	Operating Humidity	-	30 - 90%RH (No Condensing)						
24	Storage Temperature	-	-30 - +75°C						
25	Storage Humidity	-	10 - 90%RH (No Condensing)						
26	Cooling	-	Convection Cooling						
27	Withstand Voltage	-	Input - FG : 2kVAC (10mA), Input - Output : 3kVAC (10mA) Output - FG : 500VAC (20mA) for 1min						
28	Isolation Resistance	-	More than 100MΩ at 25°C and 70%RH Output - FG : 500VDC						
29	Vibration	-	At no operating, 10 - 55Hz (Sweep for 1min) 19.6m/s <sup>2</sup> Constant, X,Y,Z 1hour each.						
30	Shock	-	Less than 196.1m/s <sup>2</sup>						
31	Safety	-	Approved by UL60950-1, CSA60950-1, EN60950-1, EN50178(OV II), Designed to meet DENAN at 100VAC Only.						
32	Conducted Emission	-	Designed to meet EN55011/EN55022-B, FCC-B, VCCI-B						
33	Radiated Emission	-	Designed to meet EN55011/EN55022-B, FCC-B, VCCI-B						
34	Immunity	-	Designed to meet IEC61000-6-2 IEC61000-4-2, -3, -4, -5, -6, -8, -11						
35	Weight (Typ.)	g	350						
36	Size (W x H x D)	mm	60 x 45 x 180 ( Refer to Outline Drawing )						

\*Read instruction manual carefully, before using the power supply unit.

=NOTES=

- \*1. At 100VAC/200VAC, Ta=25°C, nominal output voltage and maximum output power.
- \*2. For cases where conformance to various safety specs (UL, CSA, EN) are required, to be described as 100 - 240VAC(50/60Hz).
- \*3. Not applicable for inrush current to a noise filter for less than 0.2ms.
- \*4. Please refer to Fig. A for measurement of output voltage, line & load regulation and ripple voltage.
- \*5. 85 - 265VAC, constant load.
- \*6. No load-Full load, constant input voltage.
- \*7. Hiccup with automatic recovery.
- Avoid to operate at over load or short circuit condition for more than 30seconds.
- \*8. OVP circuit shut down the output, manual reset (Re power on) to get output voltage.
- \*9. Measured by the each measuring method of UL, CSA, EN and DENAN(at 60Hz), Ta=25°C.
- \*10. Output Derating
  - Derating at standard mounting. Refer to output derating curve(A248-01-02/L\_).
  - About a force air cooling, refer to output derating curve (A248-01-03\_).
  - Load (%) is percent of maximum output power or maximum output current, whichever is greater.

Fig. A



C1 : Film Cap. 0.1 μF  
C2 : Elec. Cap. 100 μF

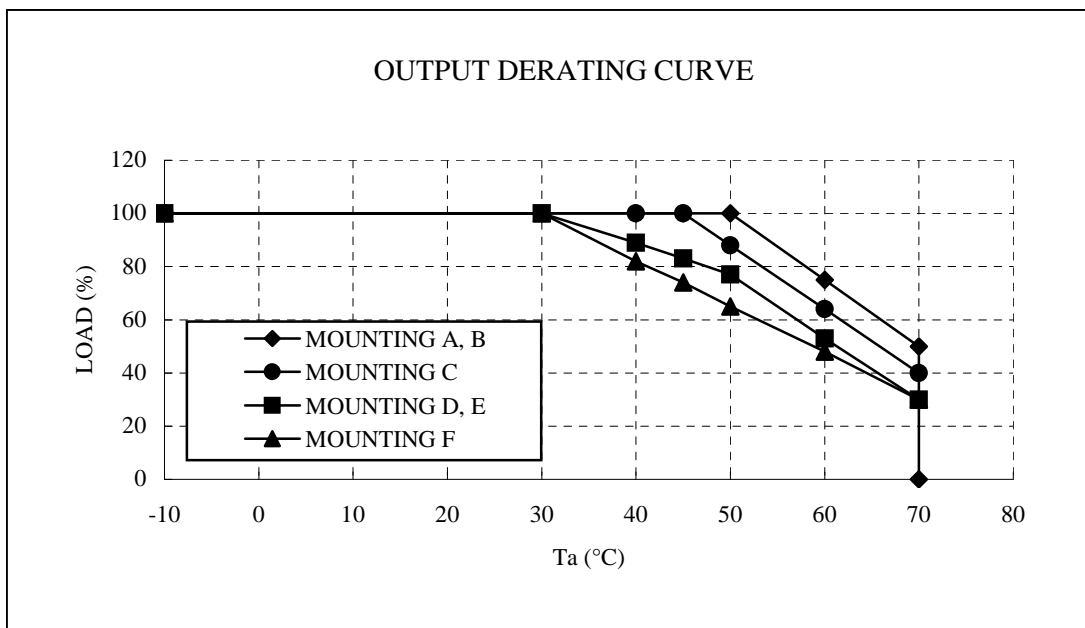
**ZWS75BAF/L**

OUTPUT DERATING

A248-01-02/L

\*COOLING : CONVECTION COOLING

Ta (°C)	LOAD (%)	LOAD (%)	LOAD (%)	LOAD (%)
	MOUNTING A, B	MOUNTING C	MOUNTING D, E	MOUNTING F
-10 - +30	100	100	100	100
40	100	100	89	82
45	100	100	83	74
50	100	88	77	65
60	75	64	53	48
70	50	40	30	30



MOUNTING A    MOUNTING B    MOUNTING C    MOUNTING D    MOUNTING E    MOUNTING F

(STANDARD MOUNTING)

