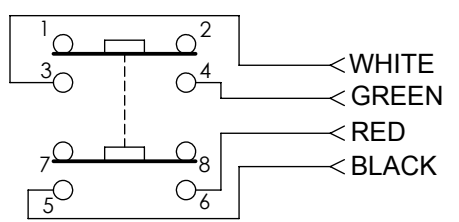
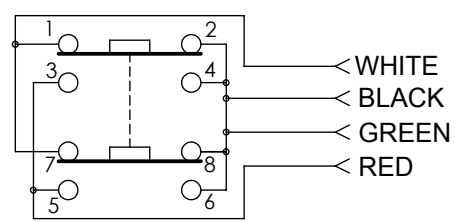


NOTES:

- SPECIFICATIONS:  
 SWITCH:  
 DOUBLE POLE, MOMENTARY  
 POSITIVE TACTILE FEEDBACK  
 NOMINAL KEY TRAVEL 0.10 INCHES  
 GOLD CONTACT FINISH  
 MAXIMUM SWITCHING CURRENT 250mA  
 MAXIMUM VOLTAGE 120V  
 MAXIMUM POWER 9 WATTS AC, 5 WATTS DC  
 MAXIMUM CARRYING CURRENT 500mA  
 MAXIMUM CONTACT RESISTANCE 80mohm  
 DIELECTRIC WITHSTANDING VOLTAGE 1,000V  
 OPERATING LIFE 100,000 CYCLES  
 OPERATING TEMPERATURE -25 TO +75 °C  
 ACTUATING FORCE LESS THAN 2 lb
- MATERIALS:  
 SWITCH HOUSING: GRAY THERMOPLASTIC  
 ACTUATING BUTTON: YELLOW ELASTOMER  
 CONTACTS: COPPER ALLOY, GOLD PLATED  
 STRAIN RELIEF: YELLOW ELASTOMER  
 CABLE: 4 CONDUCTOR, 26 AWG STRANDED, GRAY PVC JACKET



E921KA  
WIRING DIAGRAM  
"A" CIRCUIT



E921KC  
WIRING DIAGRAM  
"C" CIRCUIT

**CUSTOMER DRAWING**

					THIS DRAWING DESCRIBES A DESIGN CONSIDERED PROPRIETARY IN NATURE, DEVELOPED AND MANUFACTURED BY SWITCHCRAFT INC. AND IS RELEASED ON A CONFIDENTIAL BASIS FOR IDENTIFICATION PURPOSES ONLY.							
					UNLESS OTHERWISE SPECIFIED	SIZE	WIDTH	MULT	LBS/M	TEMPER		
					1. ALL DIMENSIONS IN INCHES					MATERIAL SEE NOTE 2		
					- TWO PLACE DECIMALS ±0.02					MATERIAL SPEC No.		
					- THREE PLACE DECIMALS ±0.005					SCALE 1:1		
									<b>Switchcraft</b> <sup>®</sup>			
					DATE DRAWN	BY	CHKD	APVD				
A	ECO #27491	5-28-15	PC	TJK	2-19-15	SRC	SRC	TJK	SHEET 1 OF 1			
REV	ECO NUMBER	DATE	BY	APVD					PART No.	REV		
REVISIONS					DO NOT SCALE DRAWING				PENDANT CABLE		E921KA-E921KC	A