

MATERIALS AND FINISHES

BODY: BRASS  
PLATED GOLD

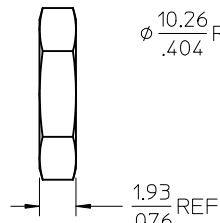
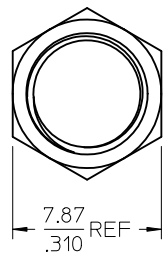
INSULATOR: TEFLON

CONTACT: BERYLLIUM COPPER  
PLATED GOLD

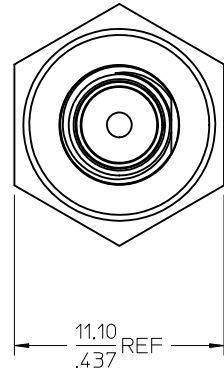
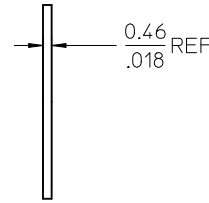
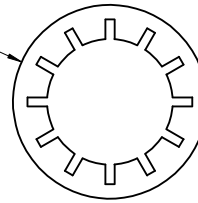
JAM NUT: BRASS  
PLATED GOLD

LOCK WASHER: PHOSPHOR BRONZE  
PLATED GOLD

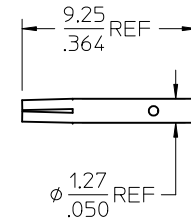
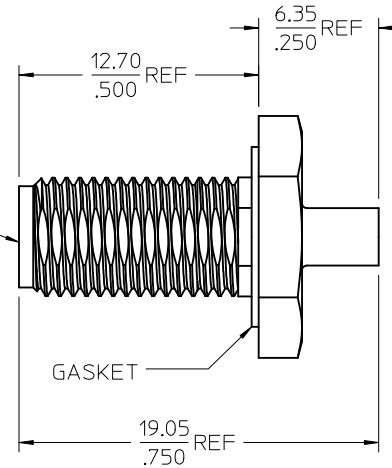
GASKET: SILICONE RUBBER



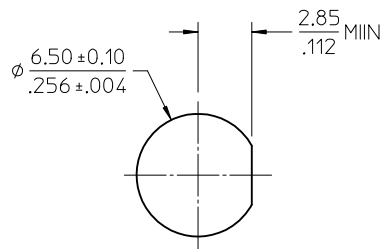
$\phi$  10.26 REF  
.404



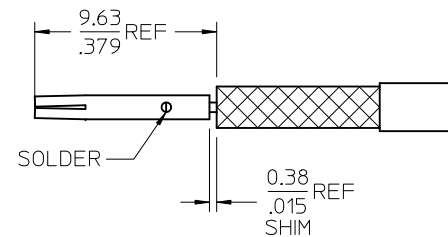
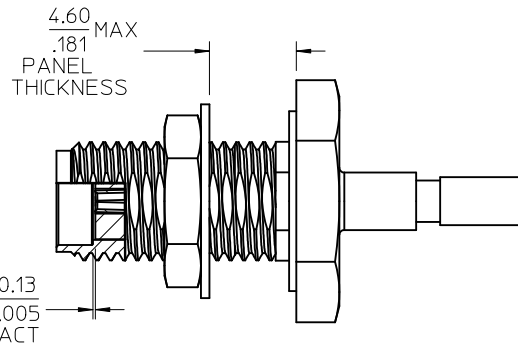
SMA JACK  
INTERFACE



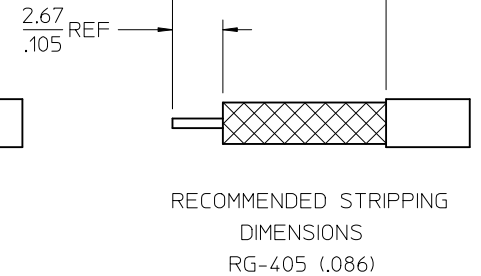
GASKET



RECOMMENDED MOUNTING HOLE



SOLDER



RECOMMENDED STRIPPING  
DIMENSIONS  
RG-405 (.086)

PART # 73251-1900

CHG: CABLED VIEW ADD MOUNTING HOLE EC NO: URF2013-0464 DRWN: JWIENER 2013/02/14 CHKD: SSS 2013/02/14 APPR: JWIENER 2013/02/14 REV: A1	QUALITY SYMBOLS $\nabla=0$ $\nabla=0$	GENERAL TOLERANCES (UNLESS SPECIFIED) mm INCH 4 PLACES ± --- ± --- 3 PLACES ± --- ± --- 2 PLACES ± --- ± --- 1 PLACE ± --- ± --- ANGULAR ± 2 °	DIMENSION STYLE MM/IN DRAWN BY DATE SSS 2002/02/28 CHECKED BY DATE TEF 2002/02/28 APPROVED BY DATE GMH 2002/02/28	SCALE DESIGN UNITS METRIC	THIRD ANGLE PROJECTION
				TITLE SMA JACK STRAIGHT BULKHEAD RG-405 (.086) SMA-JC	MATERIAL NO. 732511900
DRAFT WHERE APPLICABLE MUST REMAIN WITHIN DIMENSIONS			MOLEX MOLEX INCORPORATED	DOCUMENT NO. SD-73251-190	THIS DRAWING CONTAINS INFORMATION THAT IS PROPRIETARY TO MOLEX INCORPORATED AND SHOULD NOT BE USED WITHOUT WRITTEN PERMISSION