

Welcome to the Windows XP Installation Guide

Installing Drivers

To install drivers for an device under Windows XP and XP SP1, follow the instructions below:

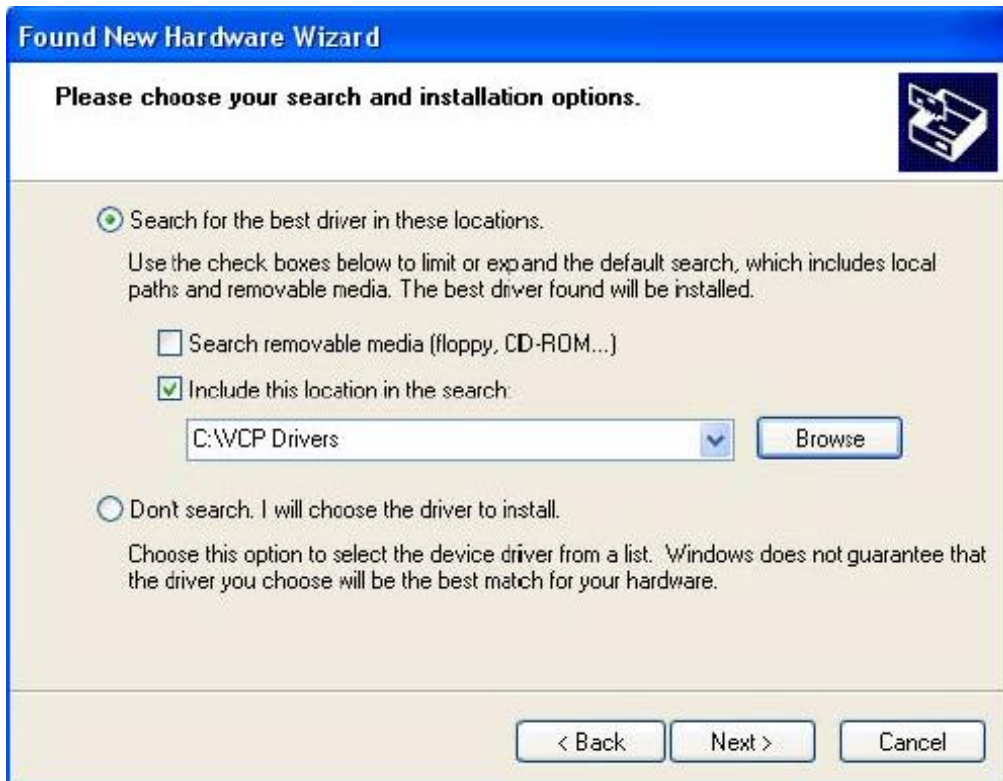
- If a device of the same type has been installed on your machine before and the drivers that are about to be installed are different from those installed already, the original drivers need to be uninstalled.
- If you are running Windows XP or Windows XP SP 1, temporarily disconnect your PC from the Internet. This can be done by either removing the network cable from your PC or by disabling your network card by going to the "Control Panel\Network and Dial-Up Connections", right-clicking on the appropriate connection and selecting "Disable" from the menu. The connection can be re-enabled after the installation is complete. This is not necessary under Windows XP SP 2 if configured to ask before connecting to Windows Update. Windows XP SP 2 can have the settings for Windows Update changed through "Control Panel\System" then select the "Hardware" tab and click "Windows Update".
- Connect the device to a spare USB port on your PC. This will launch the Windows Found New Hardware Wizard. If there is no available Internet connection or Windows XP SP 2 is configured to ask before connecting to Windows Update, the screen below is shown. Select "No, not this time" from the options available and then click "Next" to proceed with the installation. If there is an available Internet connection, Windows XP will silently connect to the Windows Update website and install any suitable driver it finds for the device in preference to the driver manually selected.



- Select "Install from a list or specific location (Advanced)" as shown below and then click "Next".



- Select "Search for the best driver in these locations" and enter the file path in the combo-box or browse to it by clicking the browse button. Once the file path has been entered in the box, click next to proceed.



- If Windows XP is configured to warn when unsigned (non-WHQL certified) drivers are about to be installed, the following screen will be displayed. Click on "Continue Anyway" to continue with the installation. If Windows XP is configured to ignore file signature warnings, no message will appear.



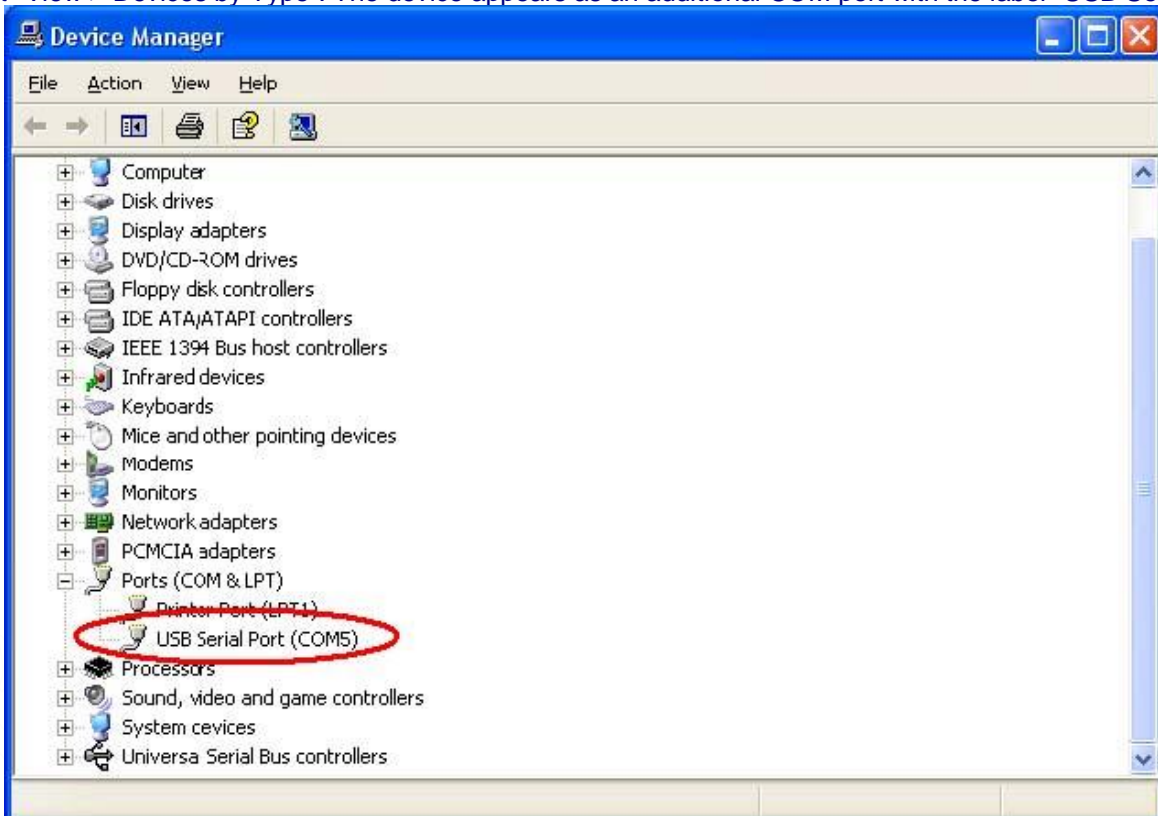
- The following screen will be displayed as Windows XP copies the required driver files.



- Windows should then display a message indicating that the installation was successful. Click "Finish" to complete the installation. This has installed the serial converter. The COM port emulation driver must be installed after this has completed.

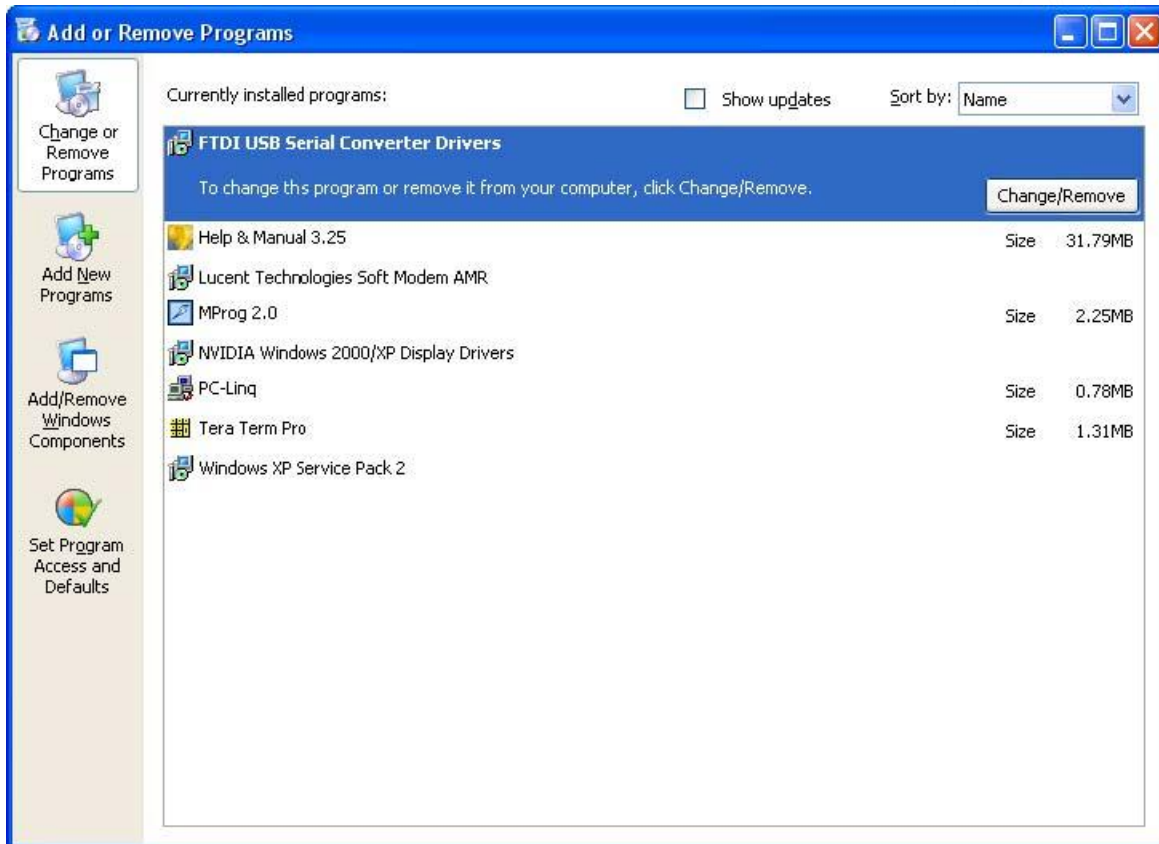


- After clicking "Finish", the Found New Hardware Wizard will continue by installing the COM port emulation driver. The procedure is the same as that above for installing the serial converter driver.
- Open the Device Manager (located in "Control Panel\System" then select the "Hardware" tab and click "Device Manger") and select "View > Devices by Type". The device appears as an additional COM port with the label "USB Serial Port".



Uninstalling Drivers

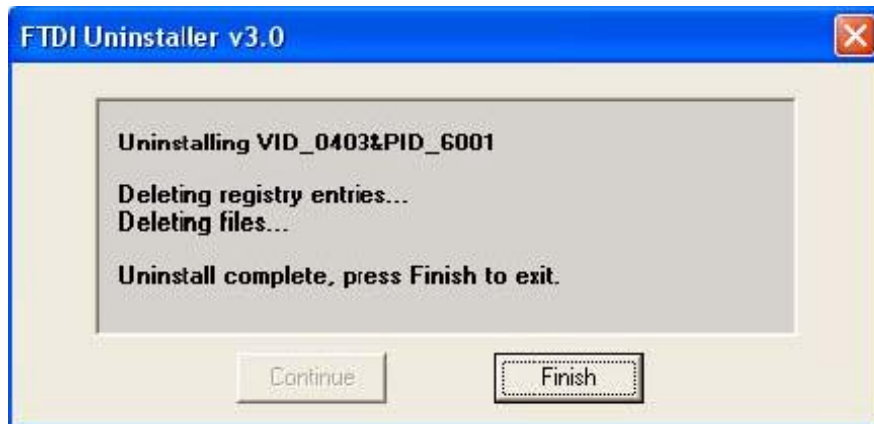
- Disconnect any devices that are attached to the PC.
- Open the Add/Remove Programs utility located in "Control Panel\Add/Remove Programs". Select "FTDI USB Serial Converter Drivers" from the list of installed programs.



- Click the "Change/Remove" button. This will run the uninstaller program. Click "Continue" to run the uninstaller or "Cancel" to exit.



- When the uninstaller has finished removing the device from the system, the caption on the "Cancel" button will change to "Finish". Click "Finish" to complete the process.



USB High Speed Serial Converter User's Guide

Overview

- The USB to Serial Converter provides a simple and easy way to afford a bridge/connectivity between the Universal Serial Bus (USB) and Serial Port interface.
- With the advantages of USB port such as plug and play & hot swap, users have the capability to utilize the peripheral with serial port interface in an easy-to-use environment. It is designed for ideal connections to Cellular Phone, Digital Camera, Modems or ISDN terminal adapters.
- The USB to Serial Converter and software driver is able to make the USB interface to be transparent to the peripherals without firmware changes, it's possible for serial port peripherals to easily interface with USB with minimum modification.

Product Features

- USB Specification Rev. 2.0 compliant
- Support the RS232 Serial interface
- Support automatic handshake mode
- USB full speed communication and bus powered
- Support windows 98se/me/2000/xp, imac os 8.6 and above, linux
- Support remote wake-up and power management

System Requirements

- IBM PC 486DX4-100 MHz CPU or higher or compatible system
- Available USB port
- CD-ROM drive

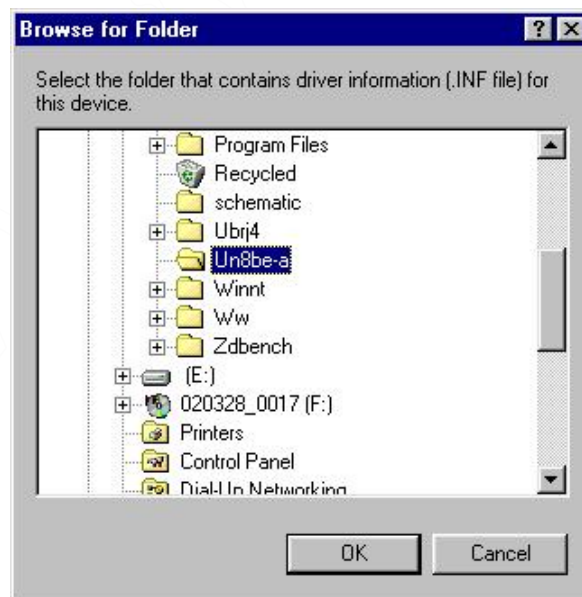
Driver Installation

Follow the steps below to install Window 98_{se} driver of USB-Serial Converter:

1. Power on your computer and make sure that the USB port is enabled and working properly.
2. Plug in the USB-Serial Converter into the USB port and run the **Add New Hardware Wizard** to assist you in setting up the new device. Click **Next** to continue.



3. Insert the USB-Serial Converter software driver into the CD-ROM drive and click Next to continue and click to search driver from the CD-ROM drive





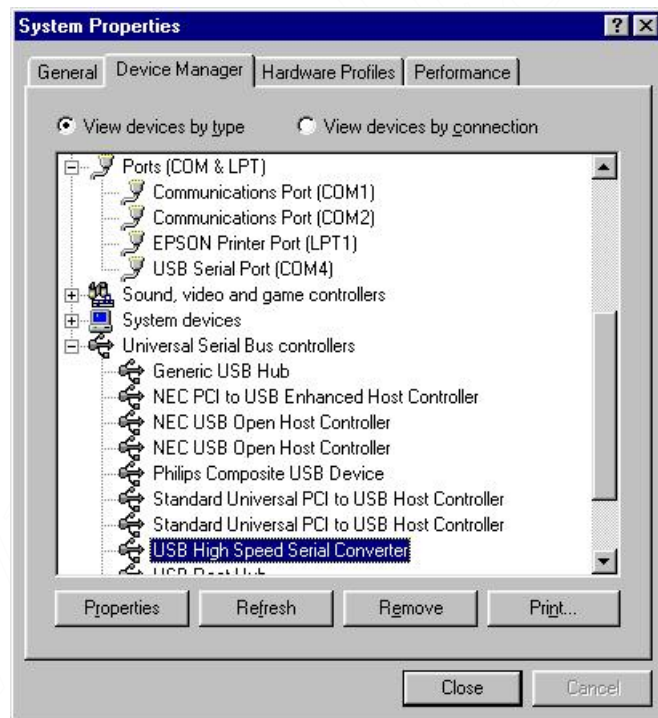
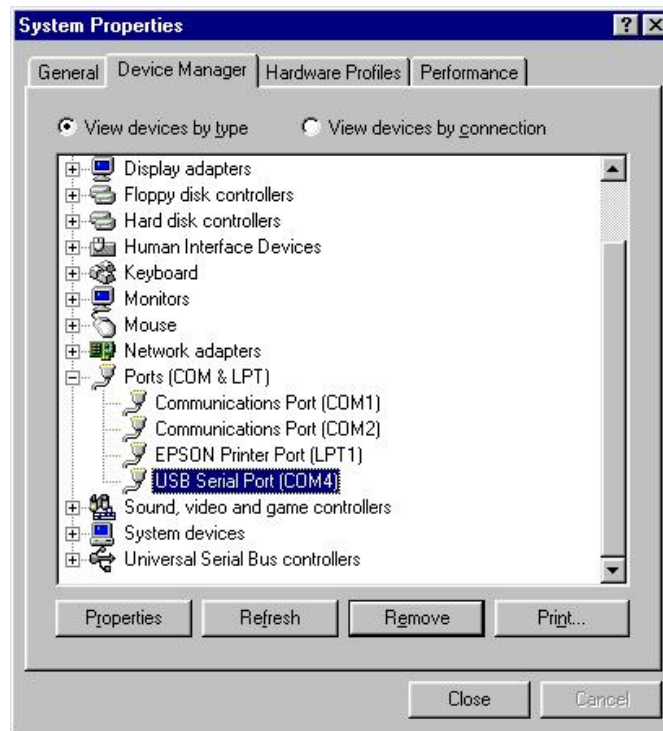
4. Windows will detect the driver and shows the **USB HS Serial Converter**. Click Next to continue installation.



5. Click Next to continue and let Windows copy the needed files to your hard disk.
6. When Windows finished installing the software,click Finish.



7. See the Device Manager to check the **USB HS Serial Converter**.



Changing the COM Port Number

1. From "Device Manager", select "View devices by type", then "Ports (COM & LPT)".
2. Select the USB serial port and click *Properties*.
3. Select the "Port Settings" tab, then click "Advanced". Choose the required COM port

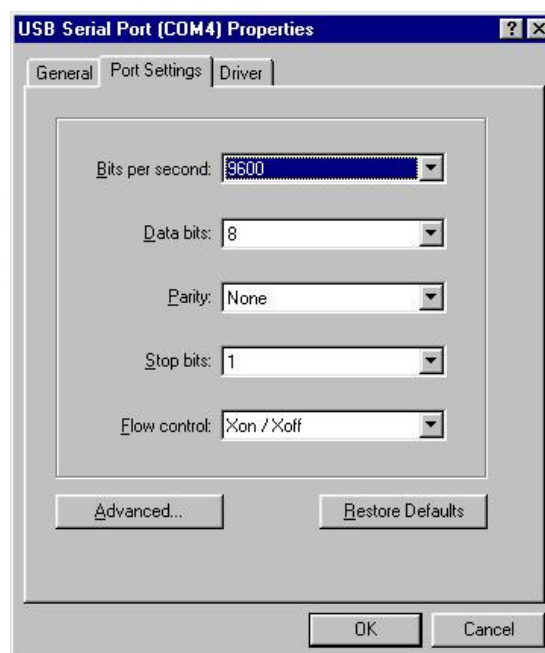
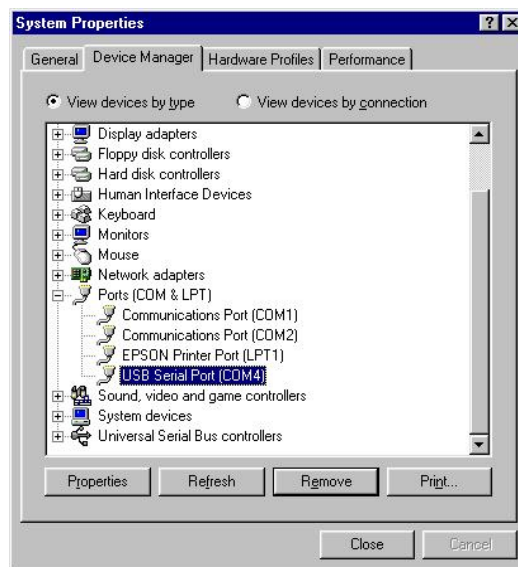
number from the list and click **OK**.

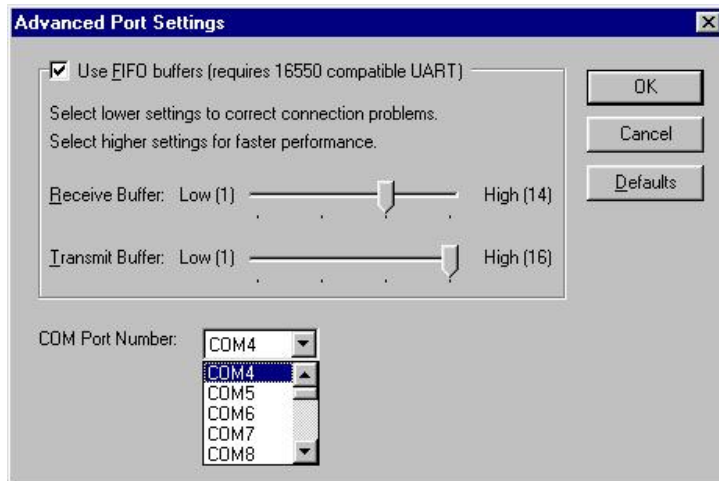
Notes

If a modem is attached to the USB serial port when the port number is changed, it will continue to work under the new port number.

If a modem had been attached to the USB serial port but was not attached when the port number was changed, it will not work when re-attached under the new port number. In this case, the modem must be removed from the system and re-installed.

In general, if there are devices in the system which have been attached previously to the USB serial port, they may not work after the port number has been changed. If this is true, remove the device from the system and re-install it.

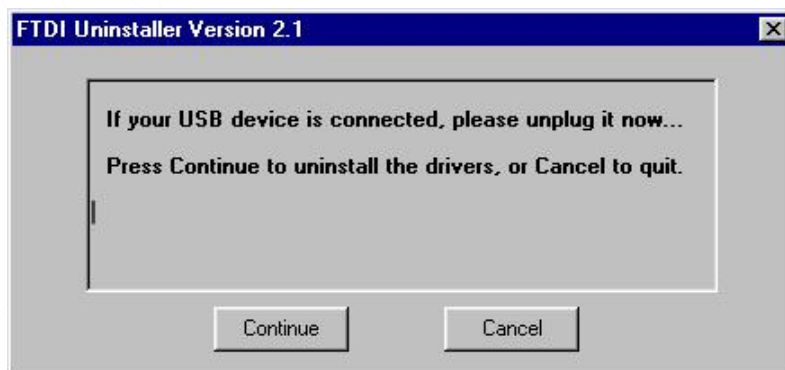
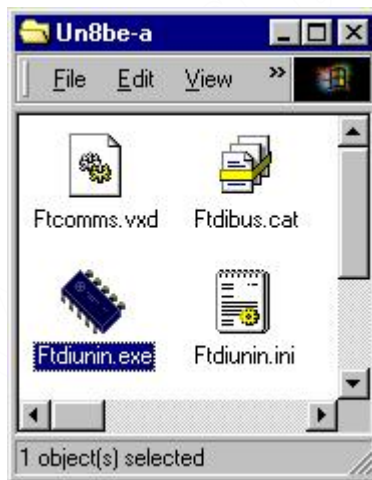




Uninstalling the Driver Program

If you want to remove the USB-Serial Converter driver program, you can uninstall it by following the steps below:

1. Unplug the USB-Serial Converter from your PC.
2. Run the "Ftdiunin.exe" program from the software CD-ROM, then Click "continue" to remove the USB-Serial Converter driver program.
3. Click "Finish", then reboot the PC.





Welcome to the Windows 2000 Installation Guide

Installing Drivers

- If a device of the same type has been installed on your machine before and the drivers that are about to be installed are different from those installed already, the original drivers need to be uninstalled.
- Connect the device to a spare USB port on your PC. This will launch the Windows Found New Hardware Wizard. Click "Next" to proceed with the installation.



- Select "Search for a suitable driver for my device (recommended)" as shown below and then click "Next".

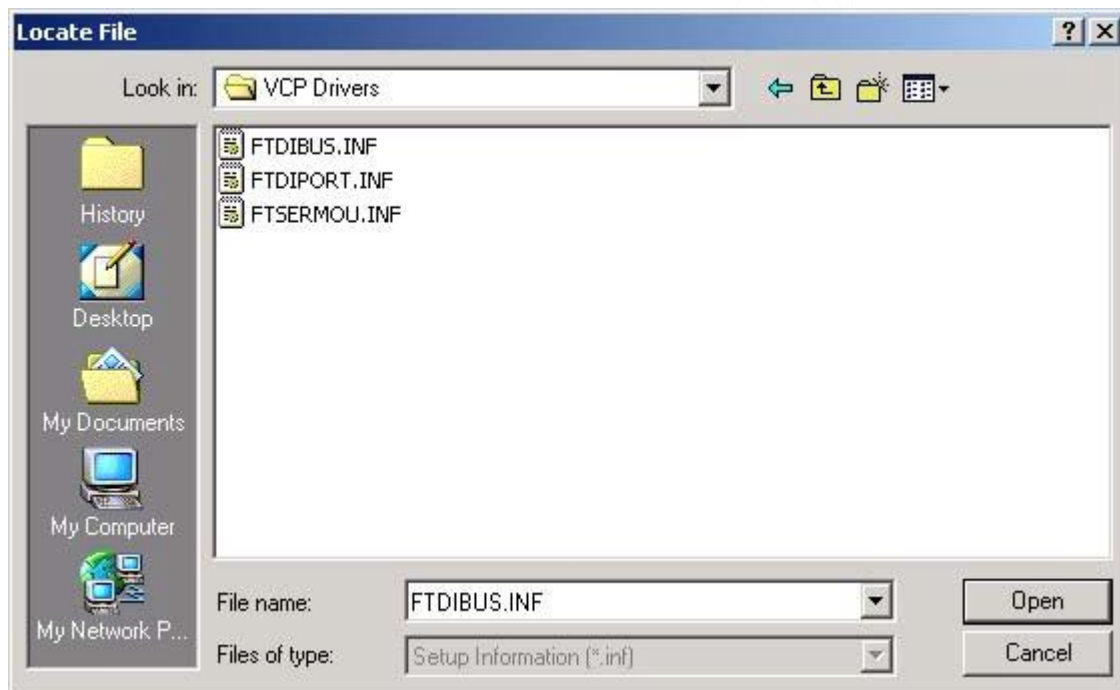


- Check the box next to "Specify a location" and uncheck all others as shown below.
- Clicking "Next" displays a dialog box for you to enter to the location of the drivers.





- Click "Browse" to display an open file dialog box.



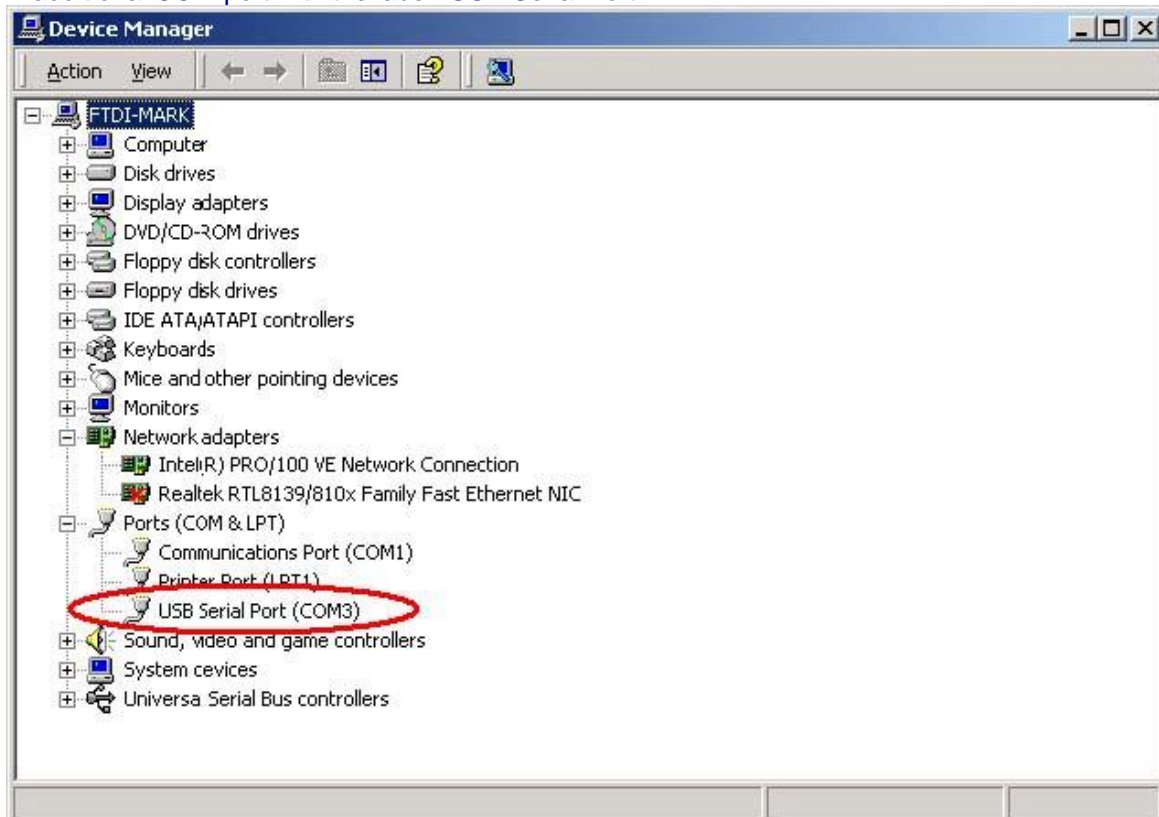
- click "Open", then click "OK". The PC autoselects the correct INF file, in this case FTDIBUS.INF. Once Windows has found the required driver .INF file, click "Next" to proceed.



- Windows should then display a message indicating that the installation was successful. Click "Finish" to complete the installation. This has installed the serial converter. The COM port emulation driver must be installed after this has completed.



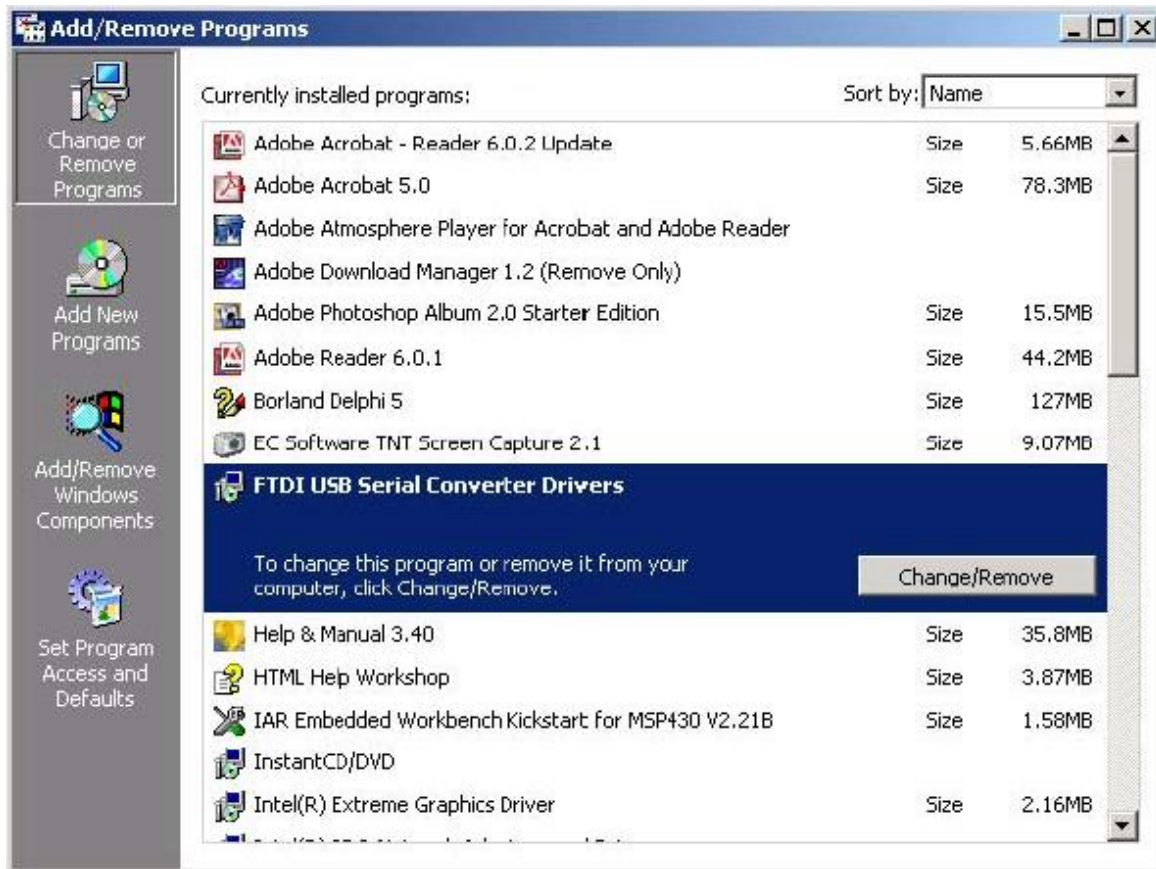
- After clicking "Finish", the Found New Hardware Wizard will continue by installing the COM port emulation driver. The procedure is the same as that above for installing the serial converter driver, except the PC will autoselect the FTDIPORT.INF file.
- Open the Device Manager (located in "Control Panel\System" then select the "Hardware" tab and click "Device Manger...") and select "View > Devices by Type". The device appears as an additional COM port with the label "USB Serial Port".



Uninstalling VCP Drivers

To uninstall drivers for devices, follow the instructions below:

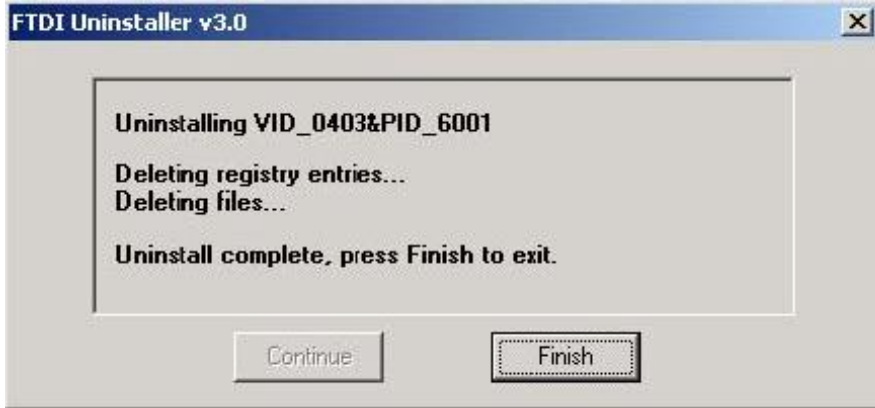
- Disconnect any devices that are attached to the PC.
- Open the Add/Remove Programs utility located in "Control Panel\Add/Remove Programs". Select "FTDI USB Serial Converter Drivers" from the list of installed programs.



- Click the "Change/Remove" button. This will run the FTDI uninstaller program. Click "Continue" to run the uninstaller or "Cancel" to exit.



- When the uninstaller has finished removing the device from the system, the caption on the "Cancel" button will change to "Finish". Click "Finish" to complete the process.



<http://www.digitronics.com>