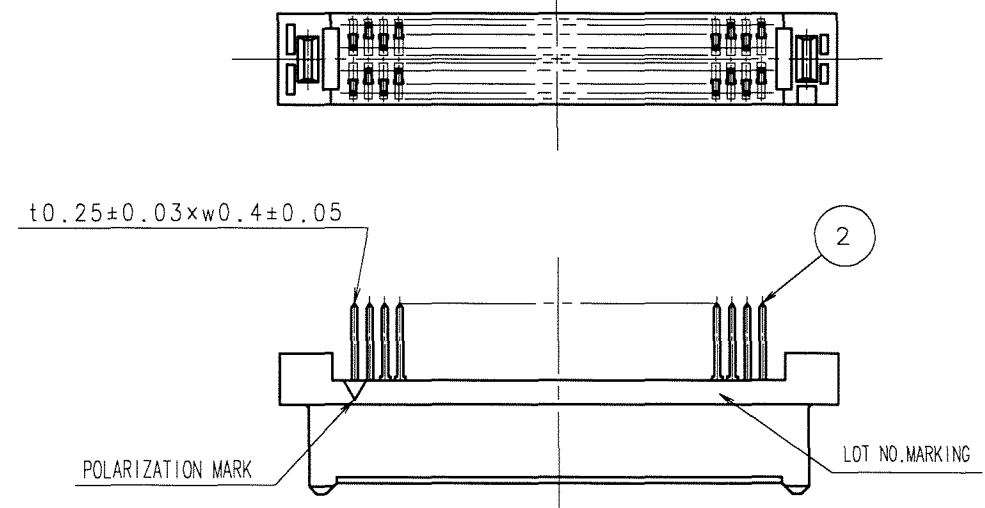
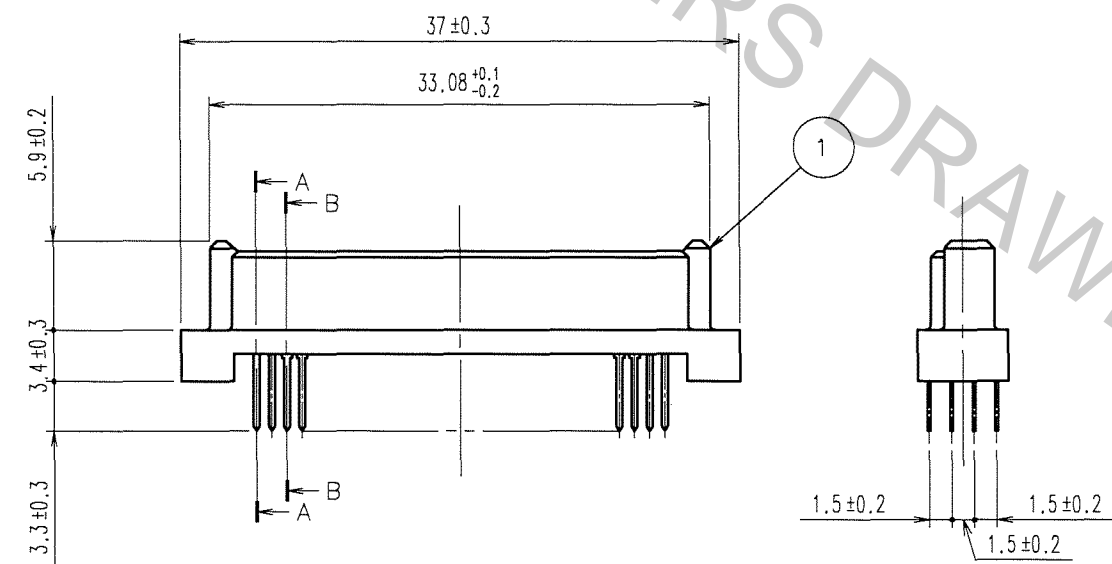
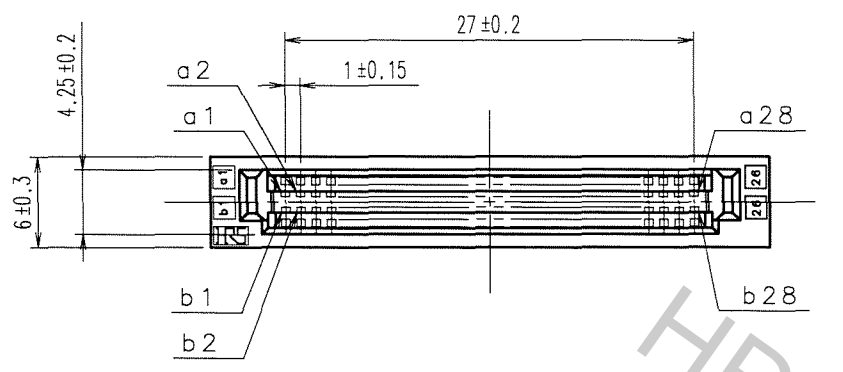


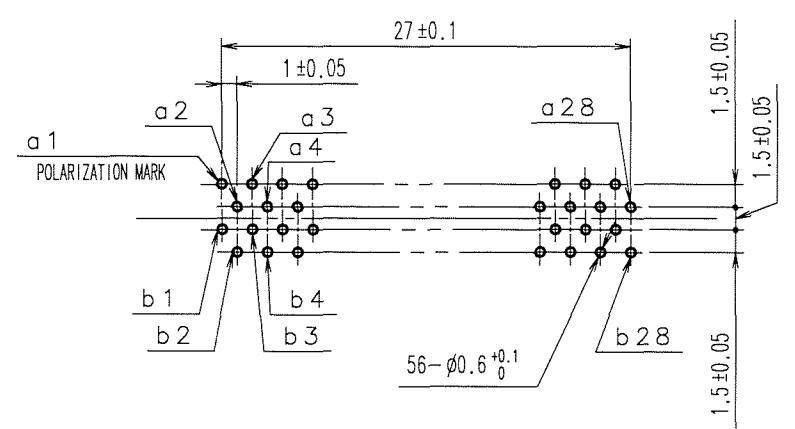
Apr.1.2017 Copyright 2017 HIROSE ELECTRIC CO., LTD. All Rights Reserved.

COUNT	DESCRIPTION OF REVISIONS	BY	CHKD	DATE	COUNT	DESCRIPTION OF REVISIONS	BY	CHKD	DATE
△					△				
△					△				
△					△				



RECOMMENDED PC BOARD HOLE PATTERN (MOUNTING SIDE)

APPLICABLE BOARD THICKNESS, 1.6

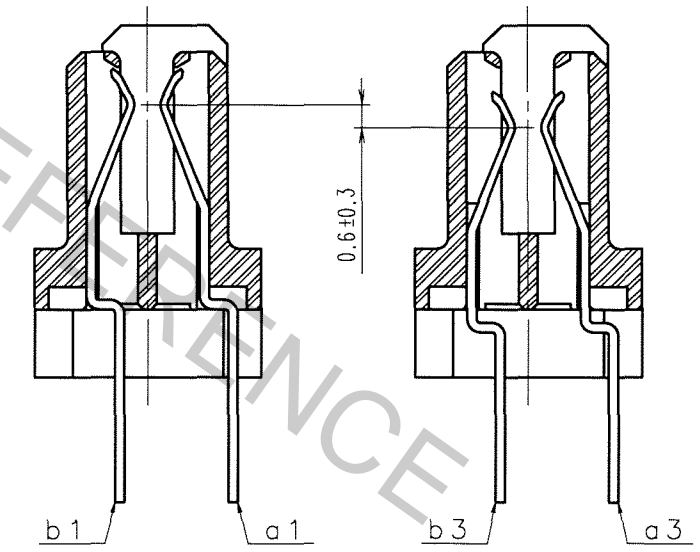


CONTACT SEQUENCE

SEQUENCE	PIN NO.
1	a1, a2, a27, a28 b1, b2, b27, b28
2	a3~a26 b3~b26

A-A (5:1)

B-B (5:1)



1	POLYAMIDE	BEIGE UL94V-0	2	PHOSPHOR BRONZE	CONTACT AREA : GOLD 0.1μm min. LEAD AREA : TIN-PLATING 1.2μm min. UNDER PLATING : NICKEL 1μm min.
NO.	MATERIAL	FINISH, REMARKS	NO.	MATERIAL	FINISH, REMARKS

CODE NO. (OLD) CL	DRAWN A. SUZUKAWA '06.10.04	DESIGNED <i>K. Nakamura</i> '06.10.04	CHECKED <i>(Gyawa)</i> '06.10.04	APPROVED <i>H. Okawa</i> '06.10.04	RELEASED ..
SCALE 2 : 1	DRAWING NO. EDC3-151416-21	PART NO. FX5-56S2A-DSA(71)		CODE NO. CL575-0107-8-71	
UNITS mm	<b>HRS</b> HIROSE ELECTRIC CO., LTD				1/1

TO