

(0.80 mm) .0315"

ZA8 SERIES

# ULTRA-LOW PROFILE MICRO ARRAYS

## SPECIFICATIONS

For complete specifications and recommended PCB layouts see [www.samtec.com?ZA8](http://www.samtec.com?ZA8)

**Insulator Material:** FR4

**Contact Material:** BeCu

**Plating:** Au over 50 μ" (1.27 μm) Ni

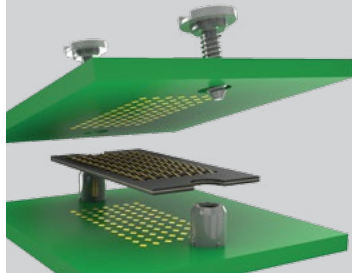
**Current Rating:** .8 A per pin (10 pins powered)

**Operating Temp Range:** -55 °C to +105 °C

**RoHS Compliant:** Yes

**Note:** Solder ball parts will come with a pick & place pad.

## APPLICATION



## HIGH-SPEED CHANNEL PERFORMANCE

**1 mm Stack Height**  
Rating based on Samtec reference channel.  
For full SI performance data visit [Samtec.com](http://Samtec.com) or contact [SIG@samtec.com](mailto:SIG@samtec.com)

**14**  
Gbps

25 g normal force with (0.20 mm) .008" contact deflection

Up to 1,200 contacts/square inch

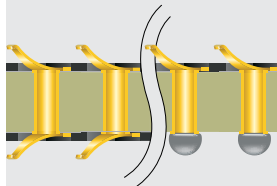
Dual compression or single compression with solder balls

BeCu contacts

Solder ball option

(1.00 mm) .040" height

## APPLICATION



Dual compression or single compression with solder balls

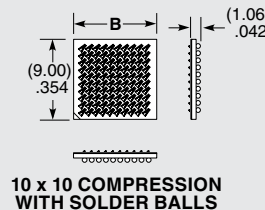
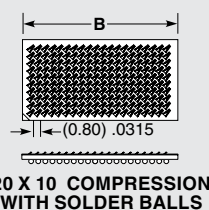
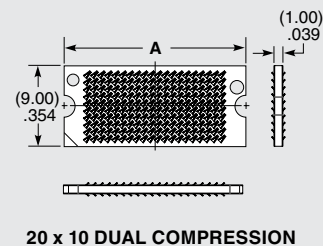
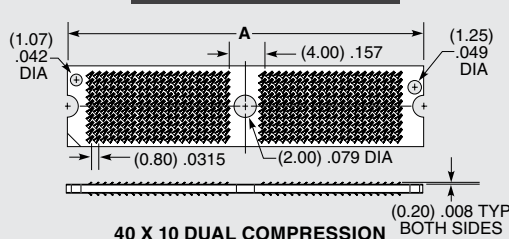
ZA8	POSITIONS PER ROW	TERMINATION	HEIGHT	PLATING	ROWS	SOLDER TYPE
	-10, -20, -30, -40	-1 = Single Compression with Solder Balls (-10 & -20 positions only)  -2 = Dual Compression (-10, -20, -30 & -40 positions only)	-1.00 = (1.00 mm) .040" Height	-Z = 6 μ" (0.15 μm) Gold in contact area	-10 = Ten Rows	(Termination -1 only)  -1 = Lead  -2 = Lead-Free

## DESIGN FLEXIBILITY

The Z-Ray® platform is highly-customizable:

<b>PITCH</b>	≥ 0.65 mm
<b>STACK HEIGHT</b>	0.50 mm to 4.00 mm
<b>DENSITY</b>	Up to 1,200 contacts/square inch
<b>RUGGEDIZING</b>	Latches, Thermal Spreaders, Quick-release Spring Constraints
<b>CONSTRUCTION</b>	Multi-layer FR4 (e.g., Pitch Spreaders)

Contact Samtec.



POSITIONS PER ROW	A	B
-10	(12.50) .492	(9.35) .368
-20	(20.50) .807	(17.35) .683
-30	(31.70) 1.248	N/A
-40	(39.70) 1.563	N/A

**Note:** Some lengths, styles and options are non-standard, non-returnable.

Due to technical progress, all designs, specifications and components are subject to change without notice.

[WWW.SAMTEC.COM](http://WWW.SAMTEC.COM)

All parts within this catalog are built to Samtec's specifications. Customer specific requirements must be approved by Samtec and identified in a Samtec customer-specific drawing to apply.