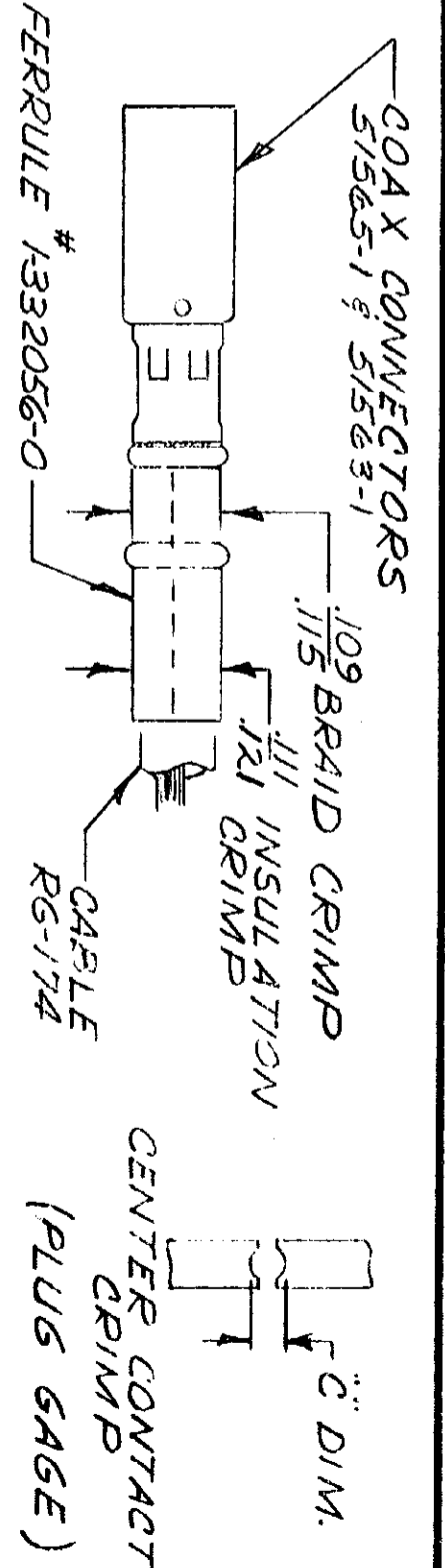
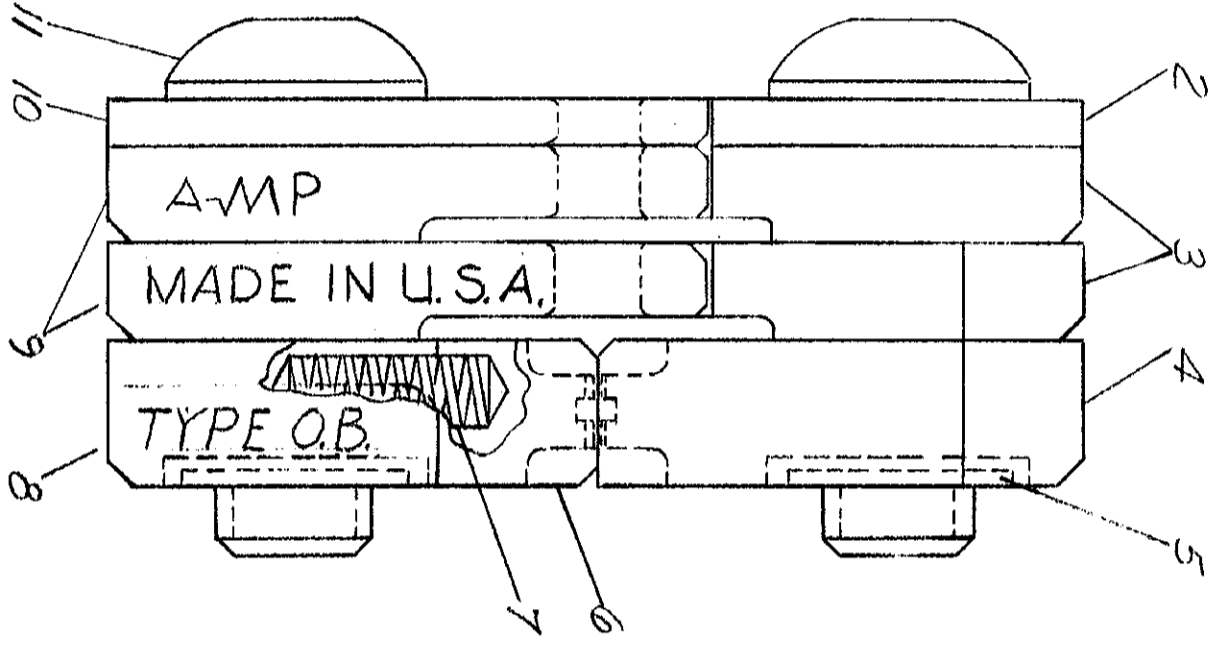
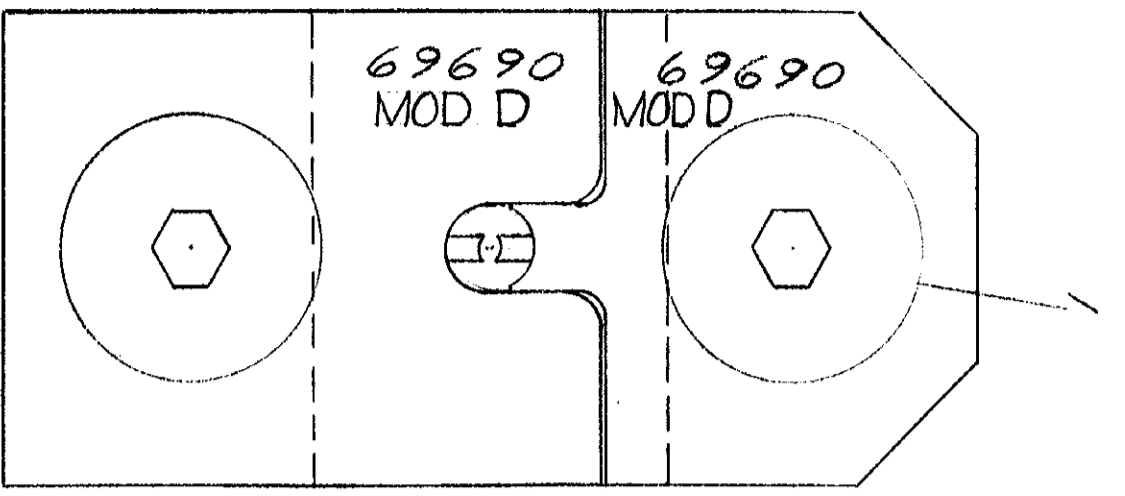


PRINT/DIST
00

DIMENSIONS IN INCHES. DO NOT SCALE PRINT



METHOD OF GAGING CRIMP DIMENSIONS
THE CRIMP DIMENSIONS APPLY ONLY TO THE
ABOVE COMBINATIONS ON A CRIMPED PRODUCT.

"C" DIA	NO 60
.018	.022

SUPERSEDED BY 1.5.2024-3

1	5306105-4	SCREW - SPECIAL	11
1	306740-1	INDENTER-INSULATION	10
2	306742	INDENTER-BRAID	9
1	306593-1	BARREL-BLOCK	8
2	305182	SPRING	7
1	306544-7	INSERT-BARREL-LOWER	6
2	1-21046-3	RING-RETAINING	5
1	306738-1	INSERT-BARREL-UPPER	4
2	306741	ANVIL-BRAID	3
1	1-45523-2	ANVIL-INSULATION	2
1	306105-9	SCREW-SPECIAL	1

DR	SUR BY 1.5.2024-3	EIF	EIF	5-6-73
D	REVISED	B5	EIF	12-30
C1	REVISED	PL		4-17-70
C	REVISED	B5		6-26
B	REVISED	B5		8-6
A	REVISED	PL	AF	11-24
LTR	REVISION RECORD	DR	CHK	DATE

NUMBER	06969
DESCRIPTION	

REQUIRED PER ASSEMBLY

DR B. Hongfeldt 1-27-66

DATE 2-1-66

WIRE RANGE - INSULATION RG-174

SCALE 4-1

LOC M

NO B

REV DI

NAME DIE ASSEMBLY MOD D

CLASS 4-1

TYPE SUB MIN COAX

AMP INCORPORATED HARRISBURG, PENNA.

CUSTOMER COPY REFERENCE ONLY