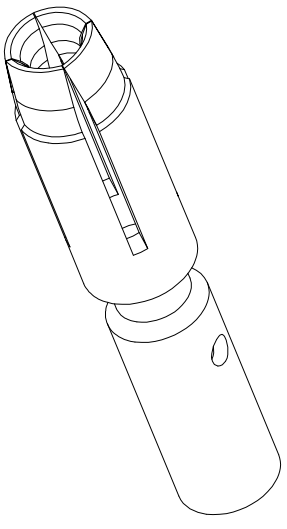
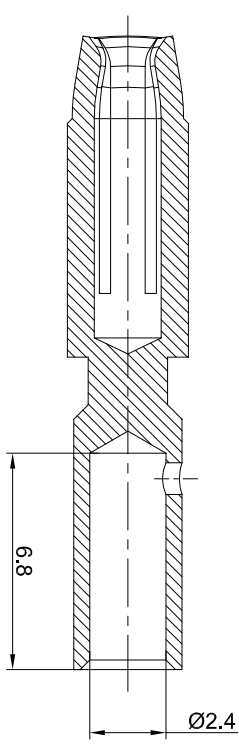
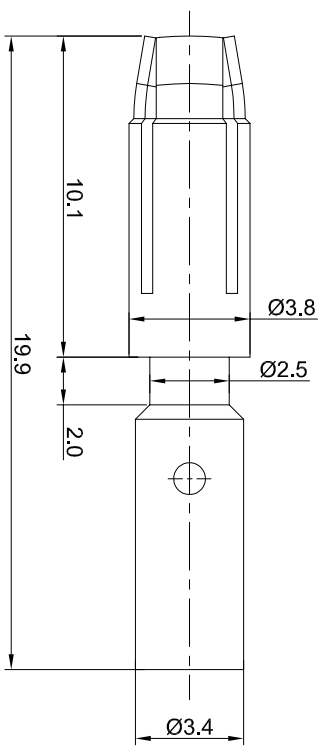
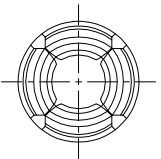


REVISIONS				
REV	ECO	DESCRIPTION	DATE	BY APPR
B1	-	RELEASE NEW DWG FORMAT	May:12,2015	DRACK TOMMY
B2	-	UPDATE THE RATED CURRENT	Mar:30,2016	DRACK TOMMY
B3	-	UPDATE THE CRIMP RANGE	Jul,10,2017	White TOMMY



- NOTES: UNLESS OTHERWISE SPECIFIED
1. MATERIAL: COPPER ALLOY, GOLD PLATED
 2. SPECIFICATIONS:
 - 2.1 RATED CURRENT: 30 AMPS
 - 2.2 RATED RESISTANCE: <3 milliohm
 - 2.3 AVAILABLE WIRE RANGE: 14AWG~20AWG
 - 2.4 ROHS COMPLIANT
 3. ALL DIMENSIONS ARE FOR REFERENCE USE ONLY.

QUANTITY	SEE PART NUMBER CHART	PART NUMBER	DESCRIPTION	ITEM
			Amphenol	
UNLESS OTHERWISE SPECIFIED 1) All dimensions are in millimeters. 2) Tolerances are as follows: 1 Pt. DEC $±0.30$ Fractions $±1/64$ 3 Pt. DEC $±0.08$ Angles $±1^\circ$ 3) Note reference =				
DRAWN: <u> </u> DATE: <u>Jul,10,2017</u>		ENGINEER: <u> </u>		
CHECKED: <u> </u>		APPROVAL: <u> </u>		
CUSTOMER: <u> </u>		MATERIAL SPECIFICATIONS: <u> </u>		
PROCESS SPECIFICATIONS: <u> </u>		THIS DRAWING IS SUPPLIED FOR INFORMATION ONLY. IT IS NOT TO BE USED FOR MANUFACTURING PURPOSES. SPECIFICATIONS AND PERFORMANCE DATA ARE THE PROPERTY OF AMPHENOL CORPORATION. NO PARTS OR REPRODUCTION ARE ALLOWED. ALL MANUFACTURING VARIATIONS ARE ACCEPTED.		
NEXT ASSY: <u> </u>		SCALE: NONE		
Socket contact:2.0mm Crimp 14~20AWG		SHEET 1 OF 1		